

GAY MEN'S CHORUS OF WASHINGTON, DC

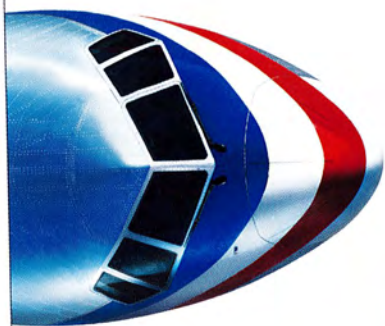


SONGS OF MY FAMILY

Kennedy Center Concert Hall • Sunday, June 24, 2007 at 3 PM
With Special Guest: DC Different Drummers' Capitol Pride Symphonic Band

The Kennedy Center





**American Airlines
Salutes
The Gay Men's Chorus
Of Washington, DC**

**Donate to GMCW
Everytime You Fly!**

Remember, you can help support GMCW every time you travel on American Airlines – at no cost to you! When making a reservation on AA.com or with a travel agent, all you need do is provide them with GMCW's Business ExtrAA account number and you will help earn valuable points for the Chorus. The best part is that you still earn your own AAdvantage Miles!

AAVacations.com/rainbow
As individual as you are

**GMCW's Business ExtrAA Number is:
766574**

AmericanAirlines, American Eagle and AA.com are marks of American Airlines, Inc.
American Eagle is American's regional airline affiliate.



GAY MEN'S CHORUS OF WASHINGTON, DC

Jeff Buhman, Artistic Director

Presents

SONGS OF MY FAMILY

SPONSORED BY:



AAvacations.com/rainbow
As individual as you are



Artistic Staff

Artistic Director	Jeff Buhman
Assistant Music Director	Thea Kano
Principal Accompanist	Theodore Guerrant
Vocal Coach Emeritus.....	Phil Rogerson
Artistic Interpreters	Jaime Coronado, Jina Lynne

Production Team

Executive Producer	Joe Vignali
Producers & Stage Managers	Barry Bugg, Larry Rosen
Production Manager	Betsy Libretta
Stage Crew	Chris Asaro, Tim Atkin, Corey Bent, Michael Cunningham, Scott Embry, Kent Forrester, Steve Katsurinis, Dan Kaufman, Jason Kuznicki, Phil Lawrence, Patrick O'Donnell, Peter Torrez, Thomas Trimmer
Ticket Sales	Steve Herman, Rachel M. Williams
Advertising Sales	Gary Regan, David Streit
Program Design	John W. Sykes
Archival Video.....	Steve Herman



Funded in part by the D.C. Commission on the Arts and Humanities, the National Endowment for the Arts, and the National Arts Marketing Project's Advanced Training Program, a program of the Arts & Business Council of Americans for the Arts made possible by a grant from the American Express Company.

come "out at arena"

ARENA STAGE 07/08

MORE HITS. MORE HEAT. MORE HISTORY TO BE MADE.

subscribe now to 3+ plays and save up to 27%

world premiere drama

33 VARIATIONS

(WORKING TITLE)

co-production with Tectonic Theater Project / written and directed by Moisés Kaufman / August 24 through September 30, 2007

contemporary comedy/regional premiere

WELL

by Lisa Kron / directed by Kyle Donnelly / September 14 through October 14, 2007

world premiere musical

THE WOMEN OF BREWSTER PLACE

co-production with Alliance Theater music, lyrics and book by Tim Acito based on the novel by Gloria Naylor directed by Molly Smith / October 19 through December 9, 2007

world premiere holiday event

CHRISTMAS CAROL 1941

adapted from Charles Dickens' *A Christmas Carol* / by James Magruder directed by Molly Smith / November 16 through December 30, 2007

sizzling musical/regional premiere

ELLA

book by Jeffery Hatcher / conceived by Rob Ruggiero & Dyke Garrison / based on an original play by Dyke Garrison / musical arrangements by Danny Holgate directed by Rob Ruggiero / December 28, 2007 through February 24, 2008

Join us for "Out at Arena," our Friday night post-show GLBT discussion series with cast members – no extra charge. Call for info.

the arthur miller festival

DEATH OF A SALESMAN

by Arthur Miller / directed by Timothy Bond / in repertory, March 14 through May 18, 2008

the arthur miller festival

A VIEW FROM THE BRIDGE

by Arthur Miller / directed by Daniel Aukin / in repertory, March 14 through May 18, 2008

outrageous comedy

THE MYSTERY OF IRMA VEP

by Charles Ludlam / directed by Rebecca Taichman / May 2 through June 8, 2008

plus...

EMERGENCE-SEE!

written and performed by Daniel Beaty / directed by Kenny Leon July 5 through July 22, 2007

KIKI & HERB:

ALIVE ON BROADWAY

created and executed by Justin Bond and Kenny Mellman March 6 through March 23, 2008



molly smith
artistic director

click www.arenastage.org
or call (202) 488-3300

ARNOLD & PORTER LLP

We are proud
to support

**The Gay Men's
Chorus of
Washington**

arnoldporter.com

Washington, DC

New York

London

Brussels

Los Angeles

San Francisco

Northern Virginia

Denver



Salutes the
Gay Men's Chorus
of Washington, DC



Barefoot Cellars is the
Official Winery of the
Gay Men's Chorus
of Washington, DC

GET BAREFOOT

www.barefootwine.com

800 750-8828

GAY MEN'S CHORUS OF WASHINGTON, DC



Now in its 26th season, the **Gay Men's Chorus of Washington, DC** is at the forefront of the gay and lesbian choral movement, continuing its mission to "entertain through excellent musical performance, to affirm the place of Gay people in society and to educate about the Gay experience."

Founded in 1981, GMCW quickly became a staple of the Washington choral music scene. Over the years, GMCW has performed at the Kennedy Center, the National Theatre, the Warner Theatre, Constitution Hall, the Lincoln Theatre and Lisner Auditorium at The George Washington University, along with a number of other venues in and around the District. In addition, GMCW has toured many of the major cities in North America and, in 1998, three Scandinavian capitals. During its 20th anniversary season, GMCW performed at Symphony Hall in Boston and Carnegie Hall in New York City. In December 2002, GMCW was honored to perform as part of the 25th annual **Kennedy Center Honors** in tribute to Elizabeth Taylor. This performance was televised nationwide, bringing the Chorus into millions of homes across the nation.

The more than 200 members of GMCW perform three subscription concerts annually: a holiday concert, a spring concert and a summer concert. GMCW also appears at a number of community events, including programs for PFLAG, Whitman-Walker Clinic and Food & Friends. While in Scandinavia, GMCW was received by Sweden's Princess Christina to thank Chorus members for singing in support of Noah's Ark, a Swedish AIDS services organization.

GMCW has also been in the forefront of commissioning new works for men's chorus. Recent commissions include *Changing Hearts* for men's chorus and chamber orchestra, *Oseh Shalom* for men's chorus and brass quintet and today's world premiere, *This House Shall Stand — Songs of My Family* for men's chorus and chamber orchestra. In addition, GMCW sponsors two small ensembles: **Potomac Fever**, a close-harmony group, and **Rock Creek Singers**, a 20-voice chamber music ensemble. These ensembles serve as representatives of GMCW at many community functions.

GMCW has won a number of awards, including the prestigious Mayor's Arts Award for artistic excellence in 1989, and four Washington Area Music Association's WAMMIE awards: in 2005 and 2003 for outstanding Choral Group, in 2002 for outstanding classical-choral recording (for *I Dream of a Time*) and in 1995 for outstanding gospel-inspirational performance (for *Live at the Lincoln*). In April 2003, GMCW received a Distinguished Service Award from the Gay & Lesbian Activists Alliance of Washington, DC for its commitment to protecting and promoting the civil rights of lesbians and gay men in the national capital area. *Pride and Joy*, GMCW's holiday music CD, was nominated for both a WAMMIE and a GLAMMA award, given by the national Gay and Lesbian Music Association. In addition, the full Chorus can be heard on the CDs *Singing Free*, *Let It Shine!*, *Pride and Joy*, *And In That Moment*, *I Dream of a Time*, *You've Got To Be Carefully Taught: The Songs of Sondheim and Hammerstein* and its latest release, *Changing Hearts*.

GMCW is a proud member of Chorus America, the Gay and Lesbian Association of Chorus (GALA Chorus), the Consortium of Gay Chorus, the Cultural Alliance of Washington, the Washington Council of Agencies, the GLBT Arts Consortium of Washington and the Center for Non-Profit Advancement.

GMCW's ensembles are activities of the Federal City Performing Arts Association, a not-for-profit, 501(c)(3) organization. Information on upcoming GMCW events may be obtained by calling **202-293-1548** or by visiting the Chorus's web page at www.gmcw.org.

MODERNISM

DESIGNING A NEW WORLD 1914 - 1939

OPEN
THROUGH
JULY 29

Experience seminal works of modern art, graphic design, and architecture at the Corcoran Gallery of Art, *Modernism's* only American venue.

TO PURCHASE TICKETS NOW and for more information about hours and admission, please visit www.corcoran.org/modernism or call (202) 639-1700.

CORCORAN
GALLERY OF ART • COLLEGE of ART + DESIGN
500 Seventeenth Street NW
Washington DC 20006

V&A

Modernism: Designing a New World 1914-1939 is organized by the Victoria and Albert Museum, London. The Corcoran's presentation is made possible through the generous support of the Lodestar Fund of the Community Foundation of the National Capital Region, Vornado/Charles E. Smith, Design Within Reach, the Dedalus Foundation, Inc., and The Solow Art and Architecture Foundation. Travel assistance is provided by Hampton-Hotels and AmTras. This exhibition is supported by an indemnity from the Federal Council on the Arts and the Humanities. Hans Ledwinka with Paul Jaray, Tatra 77a, 1938. Manufactured by Tatra Werke, Kopřivnice, Czechoslovakia, automobile collection of John Long and Helena Mitchell. Photo © 2007 Lloyd Wolf.

THE AMERICAN EXPERIENCE THROUGH

THE POETRY OF LIGHT **American**
Impressionism

PAINTINGS FROM THE PHILLIPS COLLECTION

JUNE 16 – SEPTEMBER 16, 2007




1600 21st Street, NW Dupont Circle Metro (Q Street exit)
(202) 387-2151 www.phillipscollection.org

THE PHILLIPS
COLLECTION



The exhibition and national tour are supported by the National Endowment for the Arts

2006-2007 SEASON SPONSOR **LOCKHEED MARTIN** 

Washington, DC



We Are Everywhere You Need Us To Be

Choose NCB As Your Co-op and
Condo Mortgage Lending Expert

As your national lender offering competitive fixed and adjustable rate mortgages, NCB is always looking for opportunities to make homeownership work for you. Whether you are refinancing your co-op, taking out a home equity line or thinking of purchasing a condo or single family home, NCB wants to be your bank.

MATTHEW WEHLAND

Vice President and Senior Loan Officer

TEL (202) 349-7455

WEB www.ncb.coop/mattwehland



NCB means National Consumer Cooperative Bank, its wholly-owned subsidiary NCB, FSB, and its affiliated non-profit corporation NCB Capital Impact. Each may provide loans or technical assistance as a separate entity within the NCB Financial Group. Deposit products and services are provided by NCB, FSB, which is a member of the FDIC.
©2007 NCB 2/07 06733

Greenbelt



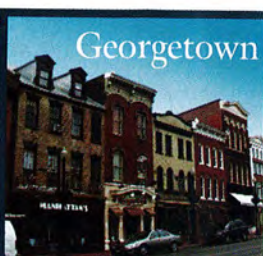
Dupont Circle



Cleveland
UPTOWN Park



Georgetown



WE CAN CHOOSE OUR FAMILIES TOO



Every family has its own way of showing support for each of its members and talking things out.

When I was a kid, I recall the way television families related to each other with a slight sense of envy. The Bradys used to have family meetings and mom, dad and Alice would be intermediaries for sibling squabbles. The Huxtables gathered around the family dinner table for big occasions and had one-on-one talks between the kids and Cliff or Clair to work through problems. And the Bunkers lovingly kept things *All in the Family*, despite Archie's gruff demeanor as the head of the household.

Modern culture picked up the pace by recognizing that *Friends* increasingly became the families that filled in for blood relatives. Ellen, Will and Grace came along to show the country that gay people are part of the American family, too. Even through latter-day slapstick, the nation is more comfortable now seeing gay people as the neighbor next door, facing the same challenges as them.

While it is true we can't "choose our families, but we can choose our friends," the definition of family continues to change. As more businesses provide employees with domestic partner benefits and more states recognize same-sex relationships, the fabric of the American family is woven more tightly and with a greater array of cloth.

GMCW celebrates this evolution with *Songs of My Family*. While the nostalgic memories of those ideal TV families from the '70s, '80s and even '90s might be entertaining, sharing some of the real stories of our families, we hope, will be sustaining.

It's our way of showing support for each other, and singing things out.

Greg D. Kubiak



BEST CELLARS[®]
GREAT WINES. GREAT VALUES.

**Best Cellars is a proud sponsor
of the
Gay Men's Chorus of Washington**

**Present this page in store
to receive**

25% OFF
your next purchase

BEST CELLARS DUPONT

1643 Connecticut Avenue NW

Washington, DC 20009

202.387.3146

COUPON GOOD FOR ONE TIME PURCHASE AND MUST BE SURRENDERED AT POINT OF SALE. COUPON NOT TRANSFERRABLE
AND APPLIES ONLY TO BEARER OF COUPON. CANNOT BE COMBINED WITH ANY OTHER DISCOUNT OFFERINGS.

EXPIRES 7/31/07



DC's Different Drummers
presents the
2007 - 2008 Season

Drama Queens on the Potomac

Capitol Pride Symphonic Band Fall Concert
October 26 & 27, 2007

Holiday Jam

DC Swing! and other DCDD ensembles
December 15, 2007

Intimate Winds

Chamber and pop works for small ensembles
February 24, 2008

Festivals of Earth

Capitol Pride Symphonic Band Spring Concert
April 25 & 26, 2008



Marching Band

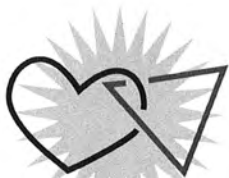


Symphonic Band



DC Swing!

www.dcdd.org (202) 269-4868



PFLAG

**Parents, Families and Friends of Lesbians
and Gays of the Metropolitan
Washington DC Area**

*Metro DC PFLAG is proud to support
The Gay Men's Chorus of
Washington, DC*

Metro DC PFLAG helps keep families together.

www.pflagdc.org • 202-638-3852

14,187 people served to date

More than 9,563,553 meals to date

3,700 meals served daily

More than 2,000 clients served annually

More than 1,200 volunteers each month

*Continuing
to Make
Beautiful Music*

 **FOOD & FRIENDS**

SONGS ABOUT FAMILIES

I often talk about two of the "great joys" of directing a gay chorus. The first joy is having the opportunity to make music with other GLBT ensembles. The second is the joy of creating new choral works that have relevance in our community and the world at large.



While GMCW typically shares concerts with other gay choruses, tonight we are honored to share the stage with the Capitol Pride Symphonic Band. This is the first time the two groups are performing together. The Capitol Pride Symphonic Band is a fine group of dedicated instrumentalists with expert musical leadership by Scott Barker. I know you will enjoy their program today. Scott and I have also planned a wonderful, combined first half finale.

Commissioning a new choral work is both daunting and exciting. This is our second major commissioned work during my tenure as artistic director. The first, *Changing Hearts*, premiered in June, 2004 in the Kennedy Center Concert Hall and was recorded that fall. I am happy to report that *Changing Hearts* has lived on and continues to touch the lives of people all over the country. It has been performed by nearly a dozen gay men's choruses from Miami, Florida all the way to Orange County, California.

The work we premiere today has traveled a two-year journey. The idea for *Songs of My Family* came from a conversation I had with former GMCW member Jim Lopresti in Ft. Lauderdale in March, 2005. As Jim recalls, "We mused over what it would be like to have GMCW commission a major work to make music out of the voices of gay and lesbian families emerging from the shadows of anonymity."

Jim is the director of the *Valuing Our Families Conference* held each spring in South Florida. The conference is sponsored by SunServe, a GLBT social service agency and The Family Pride Coalition, the national GLBT family advocacy organization. As we chatted about the conference, the idea of a new choral work which would celebrate the many different kinds of families in our society excited us both. We know there are many in our country who have a narrow definition of family. Several days later Jim sent me a *Songs of My Family* vision statement. The journey had begun.

Based on the beauty and relevance of their previous compositions, I contacted composer Robert Seeley and lyricist Robert Espindola to discuss the project. They were intrigued by the possibilities and came on board immediately. Bob and Robert have been responsible for some of the most successful commissions in the GLBT choral movement. Bob Seeley is the composer of *NakedMan*, commissioned by the San Francisco Gay Men's Chorus in 1996 and the most widely performed work by gay men's choruses. Bob and Robert began writing together in 1998 (they are partners) and are

BEYER **AUTOMOTIVE**
GROUP

making car buying easier for over 30 years

on the road less traveled,
drive something...

FABULOUS



www.beyerautogroup.com

FRIENDLY SALES AND SERVICE

FOR ALMOST 50 YEARS SCAN HAS OFFERED FURNITURE AS
UNIQUE AS YOU ARE - FROM OUR FAMILY TO YOURS.



Patrizio Sectional



An Authorized AMERICAN LEATHER® Retailer

SCAN FURNITURE CELEBRATES THE UNIQUENESS IN *ALL* OF US.

SCAN

As Unique As You Are®

1.800.386.0989 · www.scanfurniture.com · www.scanofficefurniture.com

Scan Features Unique Manufacturers:



NATUZZI
It's how you live



An Authorized AMERICAN LEATHER® Retailer

Rockville, MD • Falls Church, VA • Towson, MD • Columbia, MD • Dulles, VA

See Stores for Details. All Items Not Shown In All Stores. Quantities Are Limited. © 2007 Scan International, Inc.



SHAKESPEARE
THEATRE COMPANY

HAMLET

by William Shakespeare • directed by Michael Kahn

*What a piece of
work is a man.*

Photo of Jeffrey Carlson
by Carol Rosegg.

This Summer
Call for tickets today.
202.547.1122
ShakespeareTheatre.org
450 7th Street NW, Washington, DC 20004

Media Partner

WASHINGTON
FLYER

FROM THE ARTISTIC DIRECTOR

Continued from page 15.

responsible for works such as *This Heart of Mine*, commissioned by the New York City Gay Men's Chorus and *Metamorphosis*, commissioned by the Twin Cities Gay Men's Chorus.

They have been generous collaborators throughout this journey. I am pleased they are in the audience for the world premiere of *Songs of My Family*.

Our first challenge was finding family stories. We decided to post an online questionnaire, which proved to be very successful. Robert Espindola's lyrics are based on over 150 honest, revealing and touching stories that were collected from as far away as Utah and Germany. It is important to remember that while many of us have tender, loving family stories to share, there are also many whose family experiences are far more challenging. *Songs of My Family* speaks unvarnished truths about all **our** families, the ones we came from and the ones we have made. The 13 movements of the song cycle cover a wide range of experiences and touch on many powerful emotions.

Songs of My Family does not end with today's performance. GMCW will take *Songs of My Family* on the road during our 2007 – 2008 season. We are singing a benefit performance at James Madison University in Harrisonburg, Virginia on September 15 for the Valley AIDS Network. We travel to Miami in July, 2008 to sing *Songs of My Family* at the Gay and Lesbian Association of Choruses Festival 8.

I am hopeful that *Songs of My Family* will have many performances by many choruses around the country and that it changes many hearts and touches many lives as its journey continues.

Jeff Buhrman

David M. Bachman, M.D.

Eye Care With Compassion

Exams • Contact Lenses • HIV Specialist

1133 20th St., N.W.
Washington, DC 20036
(202) 296-4900


Stohlman



Mid-Atlantic's #1 VW Dealer

in Volume & Sales
Customer Service!

GERMAN ENGINEERING. STOHLMAN PRICE. STOHLMAN SERVICE.

Drivers wanted! 

YEAR AFTER YEAR,
STOHLMAN IS
THE #1 VW
DEALER IN
THE ENTIRE
MID-ATLANTIC.

STOP BY TODAY
AND FIND OUT WHY.



RABBIT • PASSAT • JETTA • EOS • TOUAREG • GTI • NEW BEETLE

703-893-2990

ROUTE 7 IN TYSONS CORNER, VA
STOHLMANAUTO.COM

SUBARU

TYSONS & HERNDON

Think. Feel. Drive.®



SUBARU.

ONE OF AMERICA'S TOP 15 SUBARU DEALERS!



Stop By and Find Out Why!



RANK BASED 04 SALES.

8433 Leesburg Pike In Tysons! 866-273-6895
770 Elden Street In Herndon! 703-437-6000

StohlmanAuto.com

COME DANCE WITH THE DEVIL



SIGNATURE THEATRE
BY ARRANGEMENT WITH CAMERON MACKINTOSH LTD
presents

THE AMERICAN PREMIERE

MARC KUDISCH

JACQUELYN PIRO DONOVAN CHRISTIANE NOLL EMILY SKINNER

THE WITCHES *of* EASTWICK

*A musical comedy by John Dempsey and Dana P. Rowe
Based on the novel by John Updike and the Warner Bros. Motion Picture*

Book and Lyrics by John Dempsey

Music by Dana P. Rowe

Directed by Eric Schaeffer

Original London production by Cameron Mackintosh

JUNE 5 – JULY 15, 2007

signature

Eric Schaeffer, Artistic Director
Sam Sweet, Managing Director

WHERE MUSICALS COME ALIVE
2800 S. Stafford Street, Arlington, VA 22206
800 955 5566 • www.signature-theatre.org



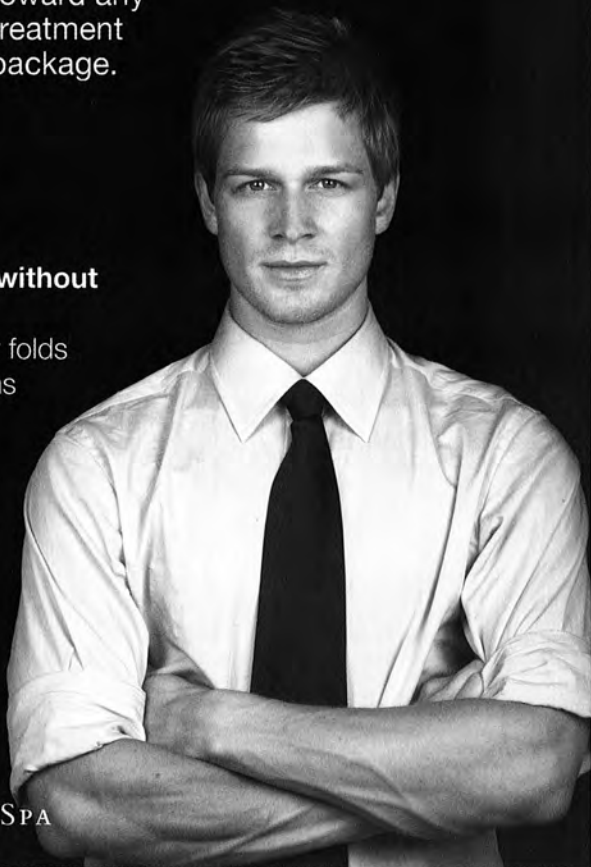
Smooth Operator

Experience the ultimate in permanent manscaping, skin care and homme improvement at Reveal MedSpa™ and enjoy an additional savings of

\$50 toward any treatment package.

Picture yourself without

- Unwanted hair
- Deep wrinkles or folds
- Small spider veins
- Sun damage
- Acne scarring
- Furrowed brow
- Enlarged pores
- Redness
- Crow's feet
- Excess fat



REVEAL  MEDSPA

866.Reveal.Me | www.reveal.com

Offer applicable toward all treatment packages including Botox® purchases of 60 units or more. Not valid toward purchase of Restylane® or Radiesse®. Not valid for cash or toward the purchase of gift cards. Ad must be presented at time of purchase. Offer expires June 30, 2007.

EMBRACING SONGS OF MY FAMILY

I wasn't exactly thrilled when I learned GMCW was commissioning a new work for this concert, *This House Shall Stand — Songs of My Family*. Family is a touchy subject for me.



My mother died of breast cancer when I was 22. My sisters and I live far apart but Mom's death brought us closer together. My father, however, grew closer to my stepmother's family. That made it easier to push him away for years, afraid he would discover my secret life. When I finally came out to him, he was not thrilled to hear it. In fact, I remember him saying, "I am not thrilled to hear this," followed by, "Do not under any circumstances tell your grandmother! This would kill her!"

Grandma and I were always close. In my earliest years our family lived at No. 33 William Street; she lived at No. 35. I saw her every day and occasionally even heard her voice on the party line. When I was five we moved to the other side of town, but only after my parents promised to bring us back for Sunday dinner each week after mass.

After Grandma retired, she taught knitting at the Senior Center. Following college I stayed in DC to work and joined GMCW in 1990. During my visits home, she would talk about the knitters: Anna Nunnari, Mrs. Mangiafesta, her best friend Hetty Davenport and dozens of others. She felt as strong a bond for them as I did for my Chorus friends, but I couldn't mention them; the gay part of my life was walled off from her. I was too afraid to talk about it and she was too sensitive to ask. At some point, old age and disease began to take her friends away from her, just as AIDS began to take mine. Then Hetty died. And Daniel Coombs, my best friend and fellow Chorus member, died. I decided then I had to come out to her. The wall had to come down.

She could not have been more accepting and supportive.

Years have passed since then. I have discovered how liberating and enriching it is to tell the story of my own family, with its mix of happiness and disappointments. Not surprisingly, I have come to embrace *Songs of My Family* because the stories are very real and honest to me. Some songs make me smile; others are more emotional. All of them speak to me. And I am not just singing them — it almost feels like I am sending a letter to a friend about something very intimate and personal.

I hope you enjoy the premiere of *This House Shall Stand — Songs of My Family*.

John "JQ" Quiñones

Managing Money Matters™

Our purpose is to simplify the complicated financial world for our clients.

Comprehensive Financial Planning Services:

- Investment Advisory Services
- Portfolio Management & Performance Reporting
- Financial & Retirement Planning
- Tax & Estate Planning

JT Hatfield Smith,
CFP®, CHFC, CLU, CLTC

Securities offered exclusively through
Raymond James Financial Services, Inc.
MEMBER NASD/SIPC 301-770-2163
Individual Solutions from Independent Advisors



Part of your financial portfolio should include **LONG TERM CARE** planning. Call Eugenia in my office today.



Eugenia Perna, CLTC
Client Services Representative
Long Term Care, Life Insurance & Disability

3202 Tower Oaks Boulevard, Suite 400
Rockville, MD 20852-4216

(301) 770-6800
www.spfinancial.com

SFC
financial INC.

Registered Investment Advisor/SEC

SONGS OF MY FAMILY

PROGRAM

DC DIFFERENT DRUMMERS' CAPITOL PRIDE SYMPHONIC BAND

Rise of the FirebirdSteven Reineke

Brimming with wind fanfares, rhythmic punctuations and exclamations in the low brass, *Rise of the Firebird* is two and a half minutes of pure excitement.

First Suite in EbGustav Holst

1. Chaconne
2. Intermezzo
Kim Webb, trumpet
Marc Martinez, clarinet
3. March

The *First Suite* is one of the most enduring compositions in symphonic band literature. Composed by one of the 20th century's most beloved composers, Gustav Holst, it features lush melodies and highlights the various colors and textures of the symphonic band ensemble.

An American ElegyFrank Ticheli
Beth Smith, trumpet

An American Elegy is, above all, an expression of hope. It was composed in memory of those who lost their lives at Columbine High School on April 20, 1999, and to honor the survivors. It is offered as a tribute to their great strength and courage in the face of terrible tragedy, an experience unfortunately repeated in April at Virginia Tech. The work serves as a reminder of how fragile and precious life is and how intimately connected we all are as human beings.

Jungle FantasyTraditional
Jim Turner, Flute Arranged by Naohiro Iwai

Jungle Fantasy is a programmatic composition which leads us into the jungle. It brings Latin and African dance styles to life in a "big band" setting.

COMBINED SELECTIONS

When You BelieveMusic & Lyrics by Stephen Schwartz
Soloist: Kerry Neal

The God Who Gave Us LifeMusic by Randall Thompson
From *The Testament of Freedom* Lyrics by Thomas Jefferson

INTERMISSION



WE KNOW YOUR NEIGHBORHOOD!

We're proud to sponsor the Gay Men's Of Washington, DC

Rod Howard

Realtor®

202.306.0056 Direct

Rod@RodAndJohn.com

www.RodAndJohn.com

RodAndJohn.com

**COLDWELL
BANKER**

RESIDENTIAL BROKERAGE

John Williams

Realtor®

202.445.7262 Direct

John@RodAndJohn.com

www.RodAndJohn.com

COLDWELL BANKER DUPONT • 1606 17TH STREET, NW • WASHINGTON, DC 20009

SONGS OF MY FAMILY

This House Shall Stand — Songs of My FamilyMusic by Robert Seeley
Lyrics by Robert Espindola

1. Always With Love
2. On Grandpa's Knee
3. The Gift of Two
Soloists: PJ Brennan, Jonny Simmonds
4. Our Stockings
5. Crossfire
6. Nightfall
Soloist: Peter Fox
7. At the Window
Soloist: Eric Belkengren
8. The Man In My Father's Life
Soloist: Katie McManus
9. Neighbors and Friends
10. A Wall of Glass
Soloist: Justin Bank
11. Dance One More Time
12. Empty Frame
Soloist: Colin James
13. This House Shall Stand

Chamber Orchestra

Piano	Theodore Guerrant
Flute	Lauren Panfili
Oboe	Rebecca Questad
Clarinet	Lori Fowser
Harp	Rebecca Smit
Cello	Daniel Shomper
Bass	Mary Scott
Percussion	Daniel Villanueva

THIS HOUSE SHALL STAND — SONGS OF MY FAMILY

1. Always With Love

Cold is the nightfall, colder the dawn
for those who still wonder where they belong.
Vivid are the memories of families they knew;
of mothers and fathers whose strength saw
them through...
Always with love.

Oh, to discover as you and as I
the dimensions of family can be redefined.
They may appear somewhat different in scope
and design,
yet equal in promise and the joy they provide...
Always with love.

Peaceful the slumber as each day is done
for those with the comfort and contentment that
comes
when embraced in a family, however expressed.
Measured and weighed; strengthened and
blessed...
Now and for always with love.

2. On Grandpa's Knee

Never was there such a place
as comforting to me,
as when I was just a little child
sitting on my grandpa's knee.

For he was wise with loving eyes to see
the secrets I held deep inside of me.
But whoever I was, I knew that his love
had plenty room for me there on his knee.

Through the years when dreams were
questioned,
or the future hard to see,
I'd pretend my grandpa still was here,
and I was sitting on his knee.

And now I find that I'm a grandpa, too,
as strange as that may seem.
And my grandchildren know that where ever
they go,
There's always room for them here on
grandpa's knee.

3. The Gift of Two

Their smiles light up a room
like a million tiny stars,
And in their eyes I can see their pride...

it's just how mothers are.

But I've heard there are children
who only have but one.
I can't imagine how just one mother
could ever do what mine have done.

And I know that I am blessed
among the very few.
For instead of having just one mother,
God chose to give me two.

Their arms are strong and sturdy
like the branches of a tree.
When I fall down they pick me up
and together they carry me.

You see, I have two fathers
unlike others that I know.
And both are gentle of spirit,
always guiding me to grow.

And I know that I am blessed
among the very few.
For instead of having just one father,
God chose to give me two.

And so I guess that we are blessed
among the very few.
For instead of having just one mother (father),
my gift is having two.

4. Our Stockings

The snow was dancing in the moonlight, carols
filled the air,
the sound of children's laughter as they were
sneaking down the stairs.
Oh, I was stary-eyed and mystified and full of
make-believe;
pretending to see Santa hiding gifts beneath the
Christmas tree.

Candles burning on the mantle with their
subtle glow,
casting gentle shadows on the stockings
hung below.
Oh, I was young and innocent, how could I
have ever known
that there would someday come a Christmas
when I would not be welcomed home?

Now it's you and I together,
watching snowflakes softly fall

LYRICS

across the same bright moonlight
that I knew when I was small.

And though the make-believe has come
and gone,
I still am stary-eyed,
for there in the glow of the candles
hang our stockings side by side.

So as we lie beside each other and fall asleep
each Christmas Eve,
I know that home is not a place we merely
come to or we leave.
But home is anywhere that love is shared and
new families are made.
It's in the hearts of those whose love us,
and in whose arms surround us every day.

5. Crossfire

There's no standing on the corner,
no place just down the block,
there is no sideline I can take,
or detour I can walk.
No space that I can turn my face,
or look the other way.
I am caught in the crossfire,
and it's always been the same.

There are no words that I can speak,
or logic to provide
that satisfies or pacifies
the ones on either side.
No argument to offer,
or advice that I can give.
I am caught in the crossfire,
It is how and where I live.

Torn between two families,
two families torn apart.
One who claims my childhood,
and one who claims my heart.

One who holds my future,
one who holds my past.
I am held within the crossfire...
Will it always be like that?

Lost within a crossfire
There is no way to win.
Who do I chose? Who do I lose?
My family...or him?

6. Nightfall

When nightfall comes, and all the world around
me is sleeping,
I lie awake all alone and think of all the many
days gone by.
And in my mind I am so grateful for each and
every crossroad
that has now brought me here to this moment in
my life.

So many friends have graced my journey
with joy,
So many hopes and dreams through them
fulfilled.
So when the stillness comes to me every
nightfall,
I am contented to be my own family...a family
of one.

So peaceful lies the world in the stillness
of the nightfall,
For I am embraced by an abundance of love,
And though I choose to live my life on my own,
I never am lonely
to travel this journey alone as a family of one.

So peaceful lies the stillness of the nightfall,
Content with who I am and all I have done.
So when the stillness comes to me every
nightfall,
I celebrate my own family of one.

7. At the Window

He waits at the window alone, with eyes
opened wide.
Secretly drying the tears he can no longer hide.
Day after day, he wonders why
others are chosen and he's left behind.
He waits...

He sits at the window alone, as the leaves turn
their shades,
Year after year on his own, as each season fades.
Praying that someday, someone will finally come
to claim him and name him and call him their
son. He waits...

He waits in a place where loneliness lives.
A house full of voices as forgotten as his.

I wait at the window alone, hoping that
moment will come,

THIS HOUSE SHALL STAND — SONGS OF MY FAMILY

For the chance that I, too, could give love to a
fatherless son.

Day after day, I've wondered why
others were chosen, and I was left behind.
I wait...

We all wait in places where loneliness lives.
With hearts full of love we are longing to give.

Now all the seasons of longing have passed;
the moments of wondering, behind us at last.
Here at the window you'll find two, not just one.
No longer waiting... a father and son.

8. The Man in My Father's Life

You touched him so deeply,
you changed his heart and soul completely.
With you he has become the man he is today.

Your strength and your kindness
taught him when fear is left behind us,
our blindness is all that's lost along the way.

Confident and sure of who he is;
beyond the masquerade that once was his.

You gave him the courage
to fight and never be discouraged.
With you he's the man I always knew that he
could be someday.

You showed him by your sweetness
that tenderness is no weakness.
Safely in your arms he has found his family.

Reaching through this world, his spirit is free.
Unafraid to love or to live his dreams!

Keep touching him deeply,
keep giving him yourself completely.
With you he's who I always knew that he could
be someday.
Because of you, he has come home to me.

9. Neighbors and Friends

On every third Saturday of the month my friends
and neighbors all meet
to share an old-fashioned picnic in the park at
the end of my street.
And you'd be amazed these friends and
neighbors seem just like any others you
will find today; with one exception...

These families happen to be gay!

Among my friends who always come
to the park
Are three old lovable bears
And my neighbors, the drag queens,
Always seem to travel in pairs.
But two of my favorite friends who meet me,
And greet me as soon as they arrive,
Are two leather daddies who know I love their
homemade pies.

And there's another friend who joins
us each week
Who's quite muscled and trim. (Could I please
sit next to him?)
With a butt that was sculptured and shaped
by his life at the gym. (He spends all his
nights at the gym!)
And I guess I'd be a liar if I denied I've long
admired
The contours of his tight-fitting jeans.
My friends and neighbors...what an
extraordinary scene!

And when I join them week to week, I see this
rich diversity.
And I'm so grateful just to be a part of this
crazy family.
It may seem different through your eyes that
such a wide array of lives
Could ever be a family...but that's what they are
to me.
On every third Saturday of the month my friends
and neighbors still meet,
Sharing an old-fashioned picnic in the park at
the end of my street.
And I've come to believe these friends and
neighbors are just like any others
That you will happen to see;
With one exception...they're all family to me!

10. A Wall of Glass

Strange comes this moment
to find he cannot be with me.
Stranger is this hour
that loneliness is here beside me.

You know where I go
he will not be.
And so until I leave,
won't you let him wait with me?

LYRICS

Let he who has always loved me
be standing near as I lay dying.
Let he who has always held me,
hold me now, just one more time.

Sad can be the endings
of those who love as we.
Sadder will be the lives
of those who watch but refuse to see.

I know that for some
The road we walk seems wrong;
but it's the road we're on,
and have discovered our love upon.

Desperately, his hand
Is pressed against a wall of glass;
You would not let him pass
to share with me this last goodbye.

11. Dance One More Time

I always imagined when our dance was over,
the music forever would end.
But here I am standing in the arms of another,
and the music is playing again.

So I am wondering my friend, if it's alright
with you,
if I take to the dance floor with somebody new?
Oh, the song may be different than the one that
we knew,
but I miss the dance as much as I'm missing
you.

I always believed our love would last a lifetime,
both of us here until the end.
I never considered that fate could deliver
a future without you, my friend.

So I am wondering somehow, could you send
me a sign,
if I dance with another, you wouldn't mind?
It won't change my heart or mean I've left you
behind.
But when you've known a love like ours,
you want to dance one more time.

12. Empty Frame

A frame, an old and empty picture frame;
but not forgotten or left behind.
It haunts me, and taunts me even now
And every time I find myself in my parents'

house...

Somehow, a stranger in their eyes...
(no surprise!)

That empty frame...

There in a hall stands a wall of memories,
With frames filled with faces of family.
Yet a wall with no picture of this loving son,
nor the one who shares his life.

That wall, that haunting and disturbing wall
does not appear the same in the home I've
made.

For no one ever claims an empty frame
as a tribute to their life.

Here where the ties that bind are strung,
my wall — it welcomes everyone!
Here on my wall I can clearly see
all who have become a part of my family.

Children born adorn my wall.
Friends and lovers are recalled.
No one's life is barren space
with an empty frame to hold their place.

13. This House Shall Stand

This house shall stand and it will not be broken
by any hand of hate or heart unkind.
And when we find that the eyes of all are
opened,
they'll learn that love is the language of our lives.

This house shall stand and future generations
will use its plan in fashioning their own.
With rafters high and doors swung wide for
reaching,
it will keep seeking to bring all children home.

This house shall stand, both dauntless and
unshaken
against the doubts and drifting fears of time.
And when at last the past is left behind us,
our love will find us still walking side by side.

This house shall stand, our families yet unbroken
by any hand of hate or heart unkind.
With rafters high and doors swung wide for
reaching,
this house shall stand as a tribute to the journeys
of our lives.

© Robert Seeley and Robert Espindola

2007-2008 Season
THE ESSENTIALS OF OPERA. THE EXCELLENCE OF WNO.

WASHINGTON
NATIONAL
OPERA
Plácido Domingo
General Director

Puccini

La Bohème

Damato*/Cvilak*, Grigolo*/Chacón-Cruz, Conductor Villaume, Director Treliński

Mozart

Don Giovanni

Schrott/Abdrzakov, Kampe, Wall*, Conductor Domingo, Director Pascoe

Bolcom

A View from the Bridge

Malfitano, Brandes*, Josephson*, Turay*, Conductor DeMaIn, Director Galati*

Wagner

The Flying Dutchman

Held, Saks, Storey*, Conrad*, Conductor Fricke, Director Lawless

Verdi

Rigoletto

Álvarez/Hawkins, Calleja*, Petrova/Lee, Silvestrelli*, Conductor Reggioli

Handel

Tamerlano

Domingo, Daniels, Coburn*, Bardon*, Conductor Lacey*, Director Rader-Shieber*

Strauss

Elektra

Bullock*, Goerke*, Mishura, Sumegj, Woodrow*, Conductor Fricke

* Company Debut

Out @ the OPERA

Register online and receive special offers and invitations to GLBT events!

E-mail outattheopera@dc-opera.org for more information.

Order Today!

Mini Subscriptions of 3 or More Operas On Sale Now!

202.295.2400 • 800.US.OPERA
www.dc-opera.org

Performances at the Kennedy Center Opera House with English supertitles.

Wheelchair accessible seating is available in all price categories for all operas. Call 202.295.2445 or e-mail adacoordinator@dc-opera.org.

Larry

PERRIN

REALTOR^(R)

LARRY PERRIN PROPERTIES

***Proudly Serving Our Community
....since 1977***

BUYING or SELLING??

Houses-Townhouses-Condos

***Montgomery & Prince Georges County Md.**

Board Of Directors:

***Chesapeake Bay Bears
& Lambda Soleil***

301.983.0601

*** EQUAL HOUSING OPPORTUNITY**

Strathmore's 2007 | 2008 Season
NOW ON SALE!



ENJOY



SAVOR



LOVE



MOVE



LAUGH



SHARE



SWING

SWOON

SUBSCRIBE



Beautiful spaces filled with music, dance, theater, and art...
Dozens of performances and events to choose from...

The best way to guarantee your seats for the excitement
is to **SUBSCRIBE**

ORDER BY JULY 6 FOR THE BEST SEATS!

ONLINE www.strathmore.org BY PHONE 301-581-5100

To view the complete season, visit us online,
or call and request a Season Brochure.

STRATHMORE

DC'S DIFFERENT DRUMMERS

DC's Different Drummers is an all-volunteer adult musical organization that serves the lesbian, gay, bisexual and transgender community of the DC metropolitan area. Its founding in January, 1980 by Michael Rutherford was inspired by the October, 1979 National March on Washington for Lesbian and Gay Rights. Ever since then, DCDD has been marching in parades and performing in concerts and at community service organization functions, often with other like-minded musical organizations such as the DC Feminist Chorus (now Bread & Roses Feminist Singers), the Gay Men's Chorus of Washington, DC, and the Lesbian & Gay Chorus of Washington, DC. DCDD is a founding member of the Lesbian and Gay Bands Association (since 1982) and a charter member of the DC GLBT Arts Consortium (since 2000).

Since its inception, DCDD has comprised both a symphonic band and a marching band. The Capitol Pride Symphonic Band performs a wide variety of traditional band literature, from show tunes to classical and post-modern pieces, and also showcases soloists. The CPSB has performed at the Lincoln Theatre for the opening of *Reel Affirmations*, at the Clarice Smith Performing Arts Center at the University of Maryland, and for the Giles Free Concert Series in Concord, NH. The DCDD Marching Band has marched in Lesbian and Gay Pride Parades in DC, Baltimore, Philadelphia, Richmond, New York, Atlanta and San Francisco; additionally, it has performed at Montgomery County and Harrisburg Pride celebrations, as well as the DC Palisades July 4th Parade. Since 1996 DCDD has included a swing band (DC Swing!) that has entertained dancing couples with swing and big band standards at the annual Mautner Project Fundraiser, for Mid-Atlantic Leather Weekend, for the Servicemembers Legal Defense Network and the Potomac Executive Network.

According to the group's bylaws, DCDD "is organized for cultural and educational purposes...including, but not limited to, the creation and maintenance of a performing musical organization, which through public performance and services, allows its members to:

- Demonstrate lesbian and gay pride through musical expression;
- Provide an opportunity for men and women to work together through music;
- Educate others about the lesbian and gay experience; and
- Have fun!

DC's Different Drummers is proud of its commitment to and representation of the GLBT community of the greater Washington, DC, metropolitan area, and is an IRS designated 501(c)(3) not-for-profit corporation, incorporated in the District of Columbia.



K. SCOTT BARKER, Artistic Director, DCDD

K. Scott Barker has served as artistic director of DC's Different Drummers since the fall of 1998. During his tenure, the band has more than doubled in size and expanded its performance schedule. In addition, it has performed at special appearances at the *Reel Affirmations* Gay and Lesbian film festival, holiday performances at the Metropolitan Community Church and with the Lesbian & Gay Chorus of Washington. Scott's programs include a wide range of music, from traditional band works to pop and

Broadway to innovative new compositions by contemporary composers. These programs combine seriousness and humor, and appeal to a gay audience while



experience

CARE • COMMITMENT • INTEGRITY • ACCOUNTABILITY
...with every real estate transaction!



DWIGHT MORTENSEN
dwight@dwrightanddavid.com
202 361 4400



DAVID BEDIZ
david@dwrightanddavid.com
202 352 8456



www.dwrightanddavid.com

When it comes to selling homes in Washington, some agents are singing a sad song. "The market's slow" they say, and your house sits. Well, the market's what you make of it, and we have a positive outlook and a strong strategy. Maybe that's why we're still selling like it's 2005 all over again, and maybe that's why buyers and sellers alike are singing our praises.

WHO'S WHO

providing outreach to those beyond the GLBT community.

Scott has also served as music director for three seasons for the GLBT Arts Consortium and Capitol Hill Arts Workshop's successful Gilbert and Sullivan productions. He was guest conductor for a national Lesbian and Gay Band Association concert band at the 2000 Millennium March on Washington.

While in college, Scott co-founded the Southern Illinois Concert Band with legendary bandmaster Ted Paschedag. He studied music at the University of Illinois, and later with Nevilla Ottley. Scott has also studied conducting at clinics at the University of Texas with Jerry Junkin, Mallory Thompson and Michael Haithcock.



BETH SMITH, Assistant Artistic Director, DCDD

Beth Smith is in her third year with DCDD. She graduated magna cum laude from Concordia College, Moorhead, Minnesota with a BA in music education. She has played euphonium in the Bloomington Medalist Community Band, the Minnesota Symphonic Winds and the Lake Wobegon Brass Band. Beth was a school band director in the Minneapolis-St. Paul area for 17 years and was Artistic Director of the Minnesota Freedom Band for four years. Beth plays trumpet in the Capitol Pride Symphonic Band, DC

Swing! and other DCDD ensembles, and served as Brass Coach before being selected to serve as Assistant Artistic Director.



KATIE MCMANUS, Guest Soloist

Katie McManus is honored and thrilled to be a part of today's very special event. Past credits include *Urinetown* (Little Becky Two Shoes) and *Nine* (Sarraghina) with Kensington Arts Theater; *Into the Woods* (Baker's Wife) with Little Theatre of Alexandria; *Company* (Amy) with The Foundry Players; *How to Succeed in Business Without Really Trying* (Miss Jones) with C.A.S.T. in McLean, VA; *Honk* (Maureen/Queenie) with Reston Community Players; *Kiss Me, Kate* (Hattie), *Guys & Dolls* and *The Best Little Whorehouse in Texas*

(Ginger) with The Arlington Players. In July, she will play siamese twin Violet Hilton in Elden Street Player's production of *Sideshow*.

Who's Who continued on page 39.

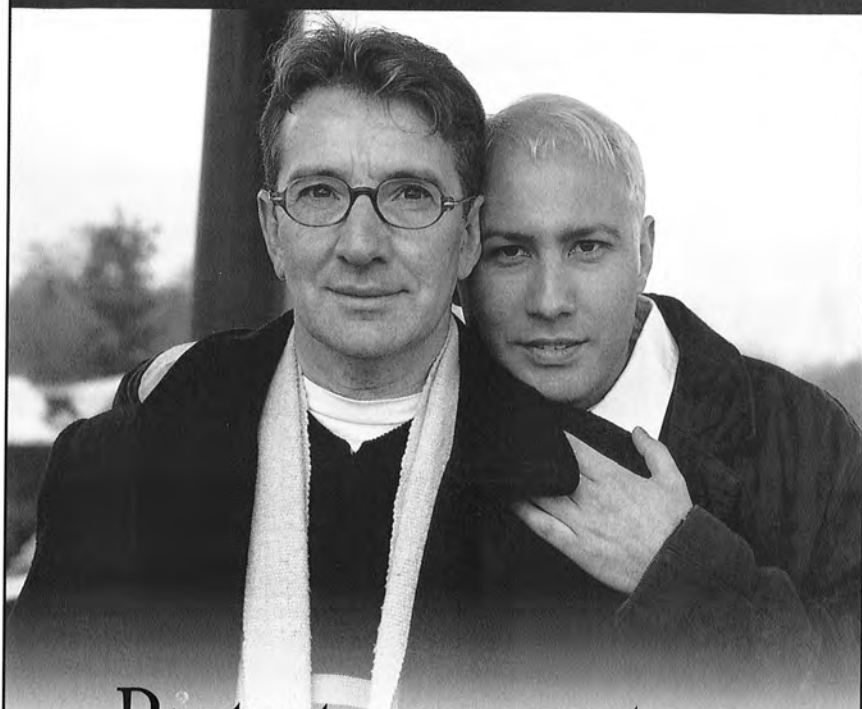
Love Our Advertisers!

When patronizing our business advertisers,
please mention you saw their ad in our concert program
and THANK THEM for supporting the Chorus!

Wills & estate planning

Powers of attorney

Living wills



Protect your partner
with the right documents

Lawrence S. Jacobs & Associates, P.C.

(301) 738-8220 ◆ (703) 536-0220

www.PartnerPlanning.com

Serving the GLBT community in DC/MD/VA since 1983



JEFF BUHRMAN, Artistic Director

Jeff Buhrman is in his seventh season as Artistic Director of the Gay Men's Chorus of Washington, DC. During his tenure the Chorus has performed in Carnegie Hall in New York, Symphony Hall in Boston and at the Kennedy Center in Washington, DC. In December 2002 GMCW was featured at the Kennedy Center Honors, appearing in the CBS television special in which the Chorus sang a tribute to Elizabeth Taylor.

Under Jeff's leadership the Chorus has grown to over 200 singers and has recorded four compact discs. GMCW's 20th anniversary CD, *I Dream of a Time*, won the 2002 Washington Area Music Association's WAMMIE award for outstanding choral recording. GMCW was also awarded the 2005 WAMMIE for best choral group. Consistently praised by local critics, GMCW was hailed as "one of the finest male choruses in the world" by *The Washington Post*. Another critic noted that "huge choruses often sound thick and ponderous, but conductor Jeff Buhrman educated a light, limber, beautifully balanced sonority that ebbed and shimmered, framing lyrics with coronas of color."

Jeff began his association with GMCW directing the small ensemble Potomac Fever in 1988, a job he held for the next ten seasons. In 2004 Jeff returned to directing the group. In 1989 he began an eight year run as Assistant Director of GMCW, working with Music Director Jim Holloway. Jeff had the honor of directing GMCW at an inauguration concert for President Clinton in 1997.

Under Jeff's direction, Potomac Fever has attained a wide following with its distinctive style, characterized by fluid phrasing and warmth of tone. One of two GMCW outreach ensembles, Potomac Fever has performed hundreds of concerts and fundraisers within the gay community and the community at large. Jeff led the group on a European tour highlighted by a performance at the opening ceremony of the European Gay and Lesbian Association of Choruses festival in Munich.

A lifelong musician, Jeff holds a Bachelor of Arts degree in music education and voice from Montclair State University and a Master's degree from George Washington University. In addition, he studied voice with Marden Bate, conducting with David Randolph and received additional training in voice with Walter Blazer of the Manhattan School of Music. He has performed with such preeminent choral conductors as Robert Shaw, Roger Wagner, David Randolph and Dennis Keene.

Adams Bank. Building relationships in all of DC's communities.



"Is this suitable attire for my appearance here, or should I get something else out of the closet?"

THE ADAMS NATIONAL BANK

Get the Abigail Adams banking experience.

FDIC
INSURED

To get the Abigail Adams banking experience call 202-772-3700, come to one of our branches or visit www.adamsbank.com.

Sleep with Us

www.guesthouseatlostriver.com

304.897.5707 guesthse@hardynet.com

288 Settlers Valley Way, Lost River, WV 26810

The **Guest House**
AT LOST RIVER

GUESTHOUSE REALTY
At Lost River

www.guesthouserealty.com

WHO'S WHO



THEA KANO, Assistant Music Director

A native of northern California, Thea Kano began studying the piano at age four. In 2004, she completed her doctorate in choral conducting under Donald Neuen at the University of California, Los Angeles. She also earned her Master of Music degree in choral conducting from UCLA, and earned her undergraduate degree in choral music education from Arizona State University. Dr. Kano taught high school vocal music and musical theater in southern California for several years. Her ensembles received several awards, including

Most Outstanding Performance at the Reno International Jazz Festival.

Dr. Kano pursued additional private conducting studies with Paul Salamunovich. While attending graduate school, Thea served as the Assistant Director of the Angeles Chorale and was Artistic Director of the San Fernando Valley Youth Chorus in Los Angeles. She was a teaching associate and administrative assistant for the Department of Choral Music at UCLA where she directed the University Chorus. Additional responsibilities included serving as Assistant Conductor of the UCLA Chorale and the UCLA Chamber Singers.

Thea came to Washington, DC in 2004 upon her multiple appointments as Assistant Director of the Gay Men's Chorus of Washington, DC, Assistant Conductor of The Washington Chorus, and Artistic Director of the Capitol Hill Youth Chorus. In addition, Dr. Kano is the founding Artistic Director of the New York City Master Chorale.



THEODORE GUERRANT, Principal Accompanist

Now in his 24th season as GMCW's Principal Accompanist, "Dr. Teddy" first came on board in 1983 as Jim Holloway's other two hands, as it were, under the baton of the late Dr. Jim Richardson. Subsequently, after serving under conductors Bruce Trinkley, Jim Holloway and Greg Ruffer, he now gaily accompanies Jeff Buhman. He has traveled with the Chorus from Vancouver to Scandinavia and from Boston to San Francisco, and passed his own half-century mark at the end of the 1999 – 2000 season as he and the Chorus headed

for San Jose and their fifth GALA experience together.

A nephew and student of the late Georgian pianist Eliza Holmes Feldman, he holds five degrees in keyboard performance: the Bachelor of Music cum laude in piano and the Master of Fine Arts in harpsichord from the University of Georgia, the Master of Music in piano from the University of Wisconsin, the Doctor of Musical Arts in piano performance literature from the University of Maryland and the Graduate Performance Diploma in organ from the Peabody Conservatory of the Johns Hopkins University in Baltimore. He was the recipient of several academic scholarships and studied piano additionally in England with Denise Lassimonne.

Dr. Guerrant is Organist-Choirmaster at Saint Margaret's Episcopal Church on Connecticut Avenue in Washington, DC (where Dignity worships), Associate Organist at Saint Mark the Evangelist Catholic Church in Hyattsville, Assisting Organist at the University of Maryland Chapel and accompanies, additionally, the Laurel Oratorio Society and the Montgomery County Masterworks Chorus. He is Coordinator of Accompanying Activities for the University of Maryland School of Music and currently belongs to seven professional music organizations. In his spare time he is fascinated by fans, clocks, organs, telephones, cats, metaphysics and musclemen.

SUNDAY & MONDAY NIGHTS

KARAOKE

every sunday and monday 9:30 - CL

THURSDAY NIGHTS
SHIRTLESS MEN DRINK FREE

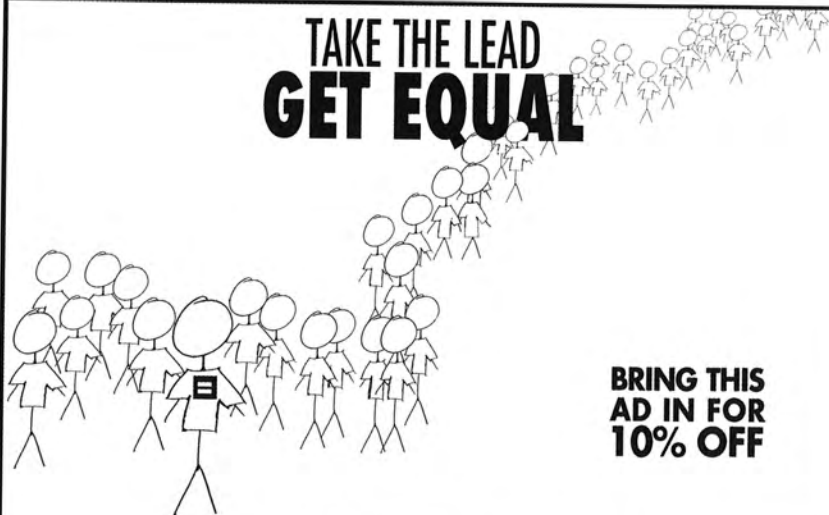
every thursday 10 - 11pm



www.greenlanterndc.com

1335 GREEN COURT NW | 202 347 4533

TAKE THE LEAD
GET EQUAL



BRING THIS
AD IN FOR
10% OFF

REVOLUTIONARY PRODUCTS:

empowering tee shirts • stylish watches • comfy sweatshirts • endearing partner rings •
fitted women's wear • classic furniture • cuddly blankets • noteworthy cards •
bumping music • sporty backpacks • fun kids wear • elegant glassware • fragrant candles •

HRC ACTION CENTER & STORE
1629 CONNECTICUT AVE., NW

STORE
202/232-8621

CATALOG
888/932-7472

ONLINE
www.hrc.org



WHO'S WHO




ROBERT JOHNSON, Executive Director

Robert Johnson earned a Master of Music degree in piano performance from Northern Arizona University and a Bachelor of Arts degree in music from the State University of New York at Geneseo. Robert's professional experience includes Associate Director of the Heifetz International Music Institute, a competitive summer music program for advanced string players and pianists, based in Ellicott City, MD, where he enjoyed great success in fundraising, marketing, community outreach and administration.

Before joining the Heifetz Institute, he was Assistant Dean at the David Hochstein School for Music and Dance in Rochester, NY, where his duties included faculty and student relations, evaluations, program development and staff management.

A singing member and assistant accompanist for GMCW since spring 2005, Robert is familiar to Chorus audiences and supporters, and is delighted to have been appointed Executive Director. He is an avid lover of musical theater and has music directed and conducted numerous shows. Most recently he was assistant conductor for the Washington Savoyards' production of *Kiss Me, Kate*, as well as rehearsal and performance pianist for GMCW's March 2007 production of *The Wizard of Oz*.



Jeepeers! I should have
gone to Stardust!

Martini Madness in our Leopard Lounge

The Menu is a Culinary Pan-ò-Rama

Get Swept Away in our Whimsical
& Dreamy Dining Rooms

More Atmosphere than the Moon!



608 Montgomery Street • Alexandria VA •
703.548.9864 • StardustRestaurant.com

GMCW'S CORPORATE CIRCLE

GMCW is pleased to offer a new opportunity for our business and corporate friends to support the Chorus — helping us to fulfill our mission to entertain, affirm and educate.

Platinum Circle Sponsor - \$15,000

- Exclusive sponsorship of a subscription concert during the 2007 – 2008 season
- One sponsor table (10 guests) with special recognition at the annual GMCW *Spring Affair*
- Two full-page color ads in three subscription concert program books
- Full-page, premium placed ad in the *Spring Affair* program book
- Sponsor logo on all concert program covers, press releases and all GMCW print advertising
- Sponsor logo and hyperlink to your business from www.gmcw.org
- Sponsor logo displayed prior to each performance of the December and March concerts
- 8 season tickets to all subscription concerts with prime seating
- 8 tickets to each non-subscription concert
- Invitation to all Capital Circle receptions
- Special recognition listing in subscription concert programs

Gold Circle Sponsor - \$10,000

- One sponsor table (10 guests) with special recognition at the annual GMCW *Spring Affair*
- Full-page back cover color ad in three subscription concert program books
- Full-page, premium placed ad in the *Spring Affair* program book
- Sponsor logo on all concert program covers, press releases and select GMCW print advertising
- Sponsor logo and hyperlink to your business from www.gmcw.org
- Sponsor logo displayed prior to each performance of the December and March concerts
- 4 season tickets to all subscription concerts with prime seating
- 4 tickets to each non-subscription concert
- Invitation to all Capital Circle receptions
- Special recognition listing in subscription concert programs

Silver Circle Sponsor - \$5,000

- Full-page black & white premium placed ad in three subscription concert program books
- Full-page ad in the *Spring Affair* program book
- Sponsor logo on all concert program covers, press releases and select GMCW print advertising
- Sponsor logo and hyperlink to your webpage from www.gmcw.org
- Sponsor logo displayed prior to each performance of the December and March concerts
- 4 season tickets to all subscription concerts with prime seating
- 2 tickets to each non-subscription concert
- Invitation to all Capital Circle receptions and *Spring Affair*
- Special recognition listing in subscription concert programs

Bronze Circle Sponsor - \$2,500

- Full-page color ad in three subscription concert program books
- 1/2 page ad in the *Spring Affair* program book
- Sponsor logo and hyperlink to your webpage from www.gmcw.org
- Sponsor logo displayed prior to each performance of the December and March concerts
- 2 season tickets to all subscription concerts with prime seating
- Invitation to all Capital Circle receptions and *Spring Affair*
- Special recognition listing in subscription concert programs

Corporate Circle Sponsor - \$1,000

- Full-page black & white ad in three subscription concert program books
- Sponsor logo and hyperlink to your webpage from www.gmcw.org
- Sponsor logo displayed prior to each performance of the December and March concerts
- Invitation to all Capital Circle receptions and *Spring Affair*
- Special recognition listing in subscription concert programs

Please contact the Chorus at 202.293.1548 to further discuss how your business can benefit through our Corporate Sponsorship program.

Taking Care.

PRICE MEDICAL...Health care with a personal connection.

We offer you expertise in all aspects of internal medicine and primary care, with a subspecialty in HIV/AIDS care.



■ **Timothy A. Price, MD**
202.463.0220
1330 New Hampshire Ave, NW
Suite 121
Washington, DC 20036
www.pricemedical.com



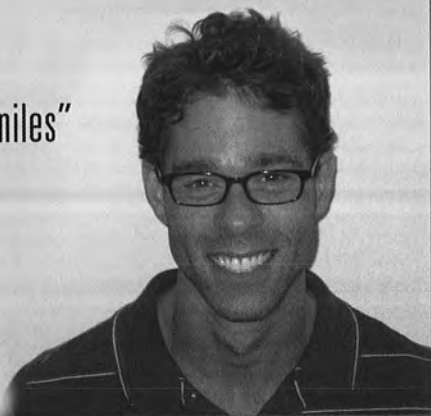
DUPONT DENTAL ASSOCIATES

"We create great smiles"

dr. gary seiden

Dupont Medical Building
1234 19th Street, NW, Suite 604

202.296.7714



www.dupontdental.com

GERARD/HERMAN MATCHING GIFT

Last fall, to honor the memory of his mother, Jack Gerard issued a \$15,000 challenge grant to match any contribution made in honor of a GMCW member, family member or friend, past or present. Steve Herman joined in by issuing an additional \$15,000 challenge. The Chorus thanks Jack, Steve and all those who contributed under the Gerard/Herman Matching Grant.

- Anonymous, In Honor of David A. Jarman
 Anonymous, In Honor of Jeremy Bauer
 American Society of Appraisers,
 In Memory of Jerry F. Larkins
 Stephen Bennett & Craig Ferrier, In Honor
 of Jack Gerard
 David Bielenberg, In Honor of
 Rachel Williams & John Sykes
 Chris Cochran
 Harvey Cohen & Michael Tardif,
 In Memory of Robb Rexroth
 Laura Covington, In Honor of Terry Spears
 Dave Daniels & Curt Brookshire
 Don DeGeorge, In Honor of
 Tony DeGeorge
 Thomas DePriest, In Memory of
 Jim Richardson
 Charles M. Dragovich, In Honor of
 Joe Henderson
 Howard Ducat/Jerry Larkins
 Dufour, Laskay & Strouse, Inc., In Memory
 of Jerry Larkins
 David Fox, In Honor of Jim Arshem &
 Steve Spar
 Jack H. Gerard, In Memory of My Mom,
 Ruth S. Backus
 Mark Graboyes, In Honor of
 Dave Robinson
 Robert & Lanette Graves, In Honor of
 Robert Kerry Graves
 Louise T. Hall
 Rob Hall
 Howland Hartley, In Memory of
 my Parents
 Steve Herman & John DiBenedetto
 Michael E. Hill & Michael W. Bigley,
 In Honor of Patricia LaBarge &
 Debbie Bigley
 Bill Hillegeist, In Memory of Jason Stelling
 Michael Hughes, In Honor of Frank Lopez
 & Rick Muniz
 Jimmy & Yvonne Jung, In Honor of
 Mark Hennen
 Wayne Kernp Vocal Studio
 Liz and Fred Kestler
 Greg Kubiak & Joe Canter
 Nick Kyrus, In Honor of Mark Hennen
 & GMCW Chorus Care Corps
 John M. LeBedda, In Memory of
 Bob Wonneberger
 Betsy & Don Libretta, In Honor of Bill Barry
 Bill Lipsett
 Susan Lissner, In Honor of Rachel Lissner
 Rob Mahaffey & Richard Kendall
 Kathleen McGee & Marsha Holloman
 Leo P. Melzer & Tilden Jio, In Honor of
 Roger & Steven
 Harley Muse, In Honor of
 Leonard J. Faina, Jr.
 James F. Padgett, In Memory of Marc Sigo
 Rhonda Panciroli, In Memory of
 Jerry Larkins
 Jayme Pittsonberger, In Memory of
 Jerry F. Larkins
 Paul Plattner & Jeffrey LaRocque, In
 Memory of Nelson L. Bain
 Bob Reeg, In Memory of Robb Rexroth
 William R. Sachau, Jr., In Honor of
 Marjorie Manalio
 Steven Sanders & Michael Phelps
 Douglas W. Sellers & Mark Eubanks
 Barry M. Sherbal, In Honor of Scott Pierce
 John Matthews & Larry Sturgeon, In
 Memory of Martha Peirsol Matthews
 & Bertha Mae Sturgeon
 David Talmage, In Honor of
 Daniel Coombs
 Agnes Jo Tepe, In Honor of
 James C. Tepe
 Jim & Barbara Tozzi, In Honor of
 Potomac Fever
 Sandra Tropper, In Memory of Jerry Larkins
 Jennifer Watkins, In Memory of
 Jerry F. Larkins
 Jim Weinstein

YES! I WANT TO SUPPORT GMCW

The Gay Men's Chorus of Washington is a project of the Federal City Performing Arts Association, a not-for-profit, 501(c)(3) organization, and is committed to affirming the gay experience through music. We are grateful to the many friends who support the Chorus by making tax-deductible contributions in support of our work. Please consider joining them and enjoying some of the following benefits that will bring you even closer to the Chorus.

—Thank You!

- Listing in all subscription concert programs (at appropriate donor level)
- Invitations to pre-concert receptions, other special events and preferred seating privileges. (Minimum gift \$500 annually)
- Complimentary tickets to the performance(s) of your choice during the season. (minimum gift of \$1000. Number of tickets increases with contribution level)
- And many more!

BECOME A FRIEND OF GMCW

- | | |
|--|--|
| <input type="checkbox"/> Presenting Sustainer\$25,000+ | <input type="checkbox"/> Patron\$1,500 – \$2,499 |
| <input type="checkbox"/> Sustainer.....\$10,000 – \$24,999 | <input type="checkbox"/> Benefactor\$1,000 – \$1,499 |
| <input type="checkbox"/> Guarantor\$5,000 – \$9,999 | <input type="checkbox"/> Sponsor\$500 – \$999 |
| <input type="checkbox"/> Pacesetter.....\$2,500 – \$4,999 | <input type="checkbox"/> Friendup to \$499 |

Name(s): _____

Address: _____

City: _____ State: _____ ZIP: _____

Phones Day: _____ Eve: _____

Listing (as it should appear in our program): _____

- In Honor/Memory of: _____ I/we wish to remain anonymous

E-mail: _____

- Enclosed is my/our check for \$_____, payable to:
Federal City Performing Arts Association, Inc.
2000 P Street, NW, Suite 730, Washington, DC 20036

- Please charge my/our gift of \$_____ to: VISA/MasterCard AmEx

Card Number: _____ Exp. Date: _____

Signature: _____

Passion

to communicate

design for print, online and interactive

- publications
- web sites
- presentations
- advertising
- branding



omnistudio

www.omnistudio.com

plates, vases, lamps
candles, teapots, soaps
lotions, scent diffusers
jonathan adler pillows,
baby blankets
hostess gifts,
dog toys and treats

soy candles,
messenger bags,
birdhouses, garden gloves
garden ornaments
pillows, blankets
stationery and more
all with an attention
to great design.

*25 artists offer
an eclectic range of
original works.*

VISIT OUR NEW
WEBSTORE AT
WWW.SHOPDETAIL.COM



Detail

a gallery for the home

117 Church Street
Rehoboth Beach, DE 19971
302.227.8170
www.shopdetail.com
home decor • art gallery

(near the Shore Inn
and the Crystal Restaurant)

mention this AD &
get a 10% discount

a unique place to shop!

DCDD'S CAPITOL PRIDE SYMPHONIC BAND

K. Scott Barker, Artistic Director
Beth Smith, Assistant Artistic Director

Flutes

Stephen Bowden
Kevin Gilbert
Anja Maguire
Kerm Towler
Jim Turner
Maarja Vigorito

Piccolos

Stephen Bowden
Kevin Gilbert

Oboes

Louis Reichwein
Daniel Waxman

E♭ Soprano Clarinet

Blake Velde

B♭ Clarinets

Gary Carroll
Jason Damaso
Andrew Ginsburg
Matthew Gonzalez
Laura Harris
Janet Larsen
Marc Martinez
Erica Preston
Bonnie Retus
George Roehm
Bill Stroud
Jeff Sturman
Greg Tarker
Blake Velde
Alison Watkins

E♭ Alto Clarinet

Greg Tarker

B♭ Bass Clarinets

Pamela Grab
Bruce Herr, Jr.

Bassoons

Jim Early
Keith Glaeske
Sharon Marshall
Steve Messina
Korey Rothman

Alto Saxophones

Stan Goff
Curtis Kennedy
Chad Koratich
Grant LaCamp
Paul Salinas
Adam Smith

Tenor Saxophones

Ron Maas
Lorrie Martin

Baritone Saxophone

Aditi Dussault

Horns

Carl Gamble
Steve Price
Jiffi Rainie
Mark Swope

Trumpets

Mary Bahr
Patrick Gray
Caroline Myers
Zachary Parker
Mark Sievers
Beth Smith
Kim Webb

Trombones

Gene Batiste
Everett Foy
Rob Heim
David E. McBee
Sarah Mortenson
Rick Stewart
Matthew Swearman

Euphonia

Steven McCoy
Liz Pomper
Eric San Juan
Lisa Marie Yount

Tubas

Bruce Murrie
Michael Relf
Wayne Warwick

Percussion

Steve Collins
David Harper
CJ Liotta
Gale Famison Robertson
Jay Wright

GMCW MEMBERS

Support

Christopher Asaro 2006
Tim Atkin 2006
Barry Bugg 1996
Scott Button 2000
Michael Cunningham 1987
Dave Edmiston 1996
Teddy Guerrant 1983
Steven Haber 1989
Randy Hebert 2005
Steve Herman 1981 (Board)
Marsha Holloman 2000
Rick Johnson 1995
Steve Katsurinis 2004 (Board)
Bob Klein 1999 (SL)
Jason Kuznicki 2000
Phil Lawrence 2005
Jina Lynne 2006
Kathy McGee 2000 (Board)
Patrick O'Donnell 2004
Shirley Paul 2000
David Ponder 2005
Laurence A. Rosen 1993 (SL)
Jun Sabilona 2006
Mary Scott 1992
Gary Turner 1993
Ray Unger 2005
Joe Vignali 1995
Stephen Bennett (Board)
Suzette Derreverre (Board)
Jack Gerard (Board)
Larry Guillemette (Board)
Greg Kubiak (Board)
Rob Mahaffey (Board)

First Tenor

Timothy Allmond, Jr. 1999
Jason Belk 2006
Tom Boeke 2006
Andrew Blair 2006
Joe Bloomer 1999
Alex Bodenham 2006
Brad Boekeloo 1992
Fred Boykin 1981
Laurence Boylan 2002 (RCS)
Charles R. Butler, Neto 1981
(RCS)
Joe Cannon 1981
Phillip Carson 2006
Randle D. Clark 2007
Marc Clodfelter 2004
Tony Conto 2003
Steve Crutchfield 1988
Bill Cutter 1998
Brian Day 1999
Richard Dew 2004 (SL)
Rob Driggers 2002 (RCS)

Greg Finch 2003
Alex Ford 1996 (SL)
Peter Fox 2002 (PF)
Paul George 2000
Jay Gilliam 2007
Byron Gwinn 2007
Bob Halbert 2001
Michael Hayes 2004
Michael Horton 2000
Scott Hubli 2003
Kip Jacobs 2006
Eric James 2002 (PF)
Kelly Johnson 2005
Ron Kludo 2005 (PF)
Jere Lorenzen 2003
Jason Lusk 2007
John J. Masters, Jr. 2005
(RCS)
Bill McClure 2006
Gordon McGraw 1998
Greg Alan Moffett 2004
Kerry Neal 2002
Jamin Olney 2006
Dennis Palaganas 2002
Dan Patton 1995 (Board)
Michael Phelps 2004
Paul E. Pompeo 2004 (Board)
Wayne Purdy 2006
Gary Regan 1990
Jack Reiffer 1998
Phil Rogerson 1981
Leorey Saligan 2006
Jonny Simmonds 2007
Benjamin Smith 2007
Jim Stanko 1990
David Streit 1988 (Board)
Brad Thompson 2006
Will Trokey 2004 (RCS)
Tim Tourbin 2005
Jeff Van Luyn 1983
Jason Varvas 2004
Richard Hooks Wayman 2007
Kevin Webster 1993
Jim Williams 1991

Second Tenor

Eric Adams 2005
Tsar Agus 2003
Jamez Appel 2007
Carl Baldwin 1992
Jay Ball 2001
Ben Balmaceda 2006
Jeremy Bauer 2005
Yoni Bock 2007
Sherman Blow 2004
Kevin Boswell 2005 (PF)

Wynn Bressler 2003
Edgar Casas 2005
Forrest Clift 2004
Paul E. Cline 1996
Chris Cochran 1995
Harvey Cohen 1985
Thomas Mitchell Deal 2007
Tony Cunningham 2002
Alvin Figer 2002
Paul Foley 2004
Martin Haley 2004
Jeff Hamlin 2000
Sean Hanrahan 2002
Andrew Harmon 2002 (RCS)
Mark Hennen 2004
Rick Jacobs 2000
Colin James 2006 (RCS)
Robert Johnson 2005
David L. Jonas 2001 (RCS)
Matt Komornik 1993
Keith Krivitzky 2006
Mark Leger 2005
Lee Lowder 2004
Leo Luberecki 2002
Stefan Lura 2007
Jim Madigan 1991 (RCS)
Joal Martin 2006
Ryan Masser 2005
Donald McArthur 2006
Gordon Mehlman 2004
Phillip Moore 2006
John O'Brien 2004 (SL)
Darren O'Neill 2002 (RCS)
Derek Orr 2006
James Padgett 2006
Guy Parker 2006
Stan Piotroski 1991
Rodman J. Ransome 2007
Scott Reiber 2004 (PF)
David Robinson 1988 (SL)
Sean Robinson 2000 (RCS)
Gary Roebuck 2006
Steven Sanders 2003
Charles Sarner 1993
Rob Serpa 2006
Paul Singletary 2000
Jeff Sliuzis 2003
Robert Smith 2003
Scott Starin 2000 (RCS)
Kurt D. Sternberg 2007
Shawn Strout 2003
Mead Summer 2001
Michael Taylor 2001
Michael Toth 2004
Justin Turpin 2007
Marc Villafana 2002

GMCW MEMBERS

Anthony Vitelli 2002
Gary Voudrie 2005
Chuck Walker 1995
Bryce Weems 2002
Ryan Williams 2004
Alexander Wright 2004
Jerry Yoder 2003
Mark Young 2006
Justin Zimmerman 2004 (PF)

Baritone

Robert M. Agnello 2002
Eric Akridge 1995
Mitch Alvarado 2005
Emerito Amaro-Carambot
2006
Ted Arceneaux 2005
Justin Bank 2006
A. Brian Bartlett 2005
Eric Belkengren 2001
Corey Bent 1994
Brad Benton 2003
Joseph Berlin 2006
Mark Blaylock 2002 (PF)
Robert T. Boaz 1997
Bennett B. Borden 2007
PJ Brennan 2004 (SL)
Joe Brookman 2005
David Bruce 2005
Jeremy Brumbelow 2003
Doug Campbell 2004
Joe Canter 1994
Don Chandler 1997
Franklin Chappell 2005
Daniel Eduardo Clavel 2006
Larry Cohen 1986
Paul Colloton 2006
Victor Comejo 2002
Chip Crews 1991
Giuseppe DeBartolo 2002
(RCS)
Richard East 2005
Justin Estoque 1998
Maurice Fox 2002
Chris Fredericks 2005
Brett H. Freeman 2004
Scott A. Frutchey 2006
Kent Gay 2006
Thom Gibb 1990
Stuart Goldstone 2001
Martin Good 2000
Christopher Grieder 1990
Rob Hall 2002 (RCS, Board)
Daniel R. Hann 2002
Michael H. Hart 2001
Howland Hartley 2001
(Board)

Daniel Head 2007
Tomás Hernández 2006
Michael Hill 2003 (PF, Board)
George Huffman 2000 (RCS)
Paul Kelsch 2002 (RCS)
Benjamin Kong 2005
Stuart Kopperman 1996
Michael Joseph Kullik 2007
Paul Lee 2003
William Lee 2001
Bill Lipsett 1991
Christopher Locklear 2003
Reggie Meneses 2005
Ralph Moore 2003
Dale Mott 2006
Charlie Mountain 2002 (PF)
Mike Nguyen 2004
Edward P. Oseroff 2000
(RCS)
Nick Pietras 2004
Larry Poole 2005
Steve Rappaport 1994 (SL)
Juan Rodriguez 2005
Will Rumble 2002
Brian Schulli 2003 (RCS)
Bob Sheavly 1999
Jeff Shields 2005
Michael B. Smith 1990 (PF)
Tim Smith 2006
Rodney Stephens 2005
Will Stevenson 2005
Carl Stewart 2002
L. Owen Taggart 2002
Gregory Tepe 1994
Brad Ward 2006
Mike Weber 2006
John Weibel 1985
Francis Yasharian 2006

Bass

Jack Bailey 2005
Michael Baker 1981
W. Eric Balthrop 1993
Adrian Blue 2006 (RCS)
Felix Boccadoro 2001
Michael Brinkman 2000 (SL)
Marcus Brown 2000 (SL)
Russ Capps 1999 (PF, Board)
Aaron J. Clarke 2004
Cory Clifton 2003
Jerry Cutcher 2006
Lenny Davis 2002
Tom DiGiovanni 1999
Dean Donovan 1997
Bob Dragoset 1984 (RCS)
Robert Featherstone 1998

Brett Fox 2006
Craig Ferrier 2003
Jimmy Galdieri 2001
Gregg Grisa 2007
Jim Gruschus 1995 (RCS)
John-Paul Hayworth 2005
Bob Hilby 1999
Harry Hagel 2007
Andy Hoffmann 2006
Michael Hughes 2002
Dennis Jaffe 1998
Dan Kaufman 1990
John Laster 2006
Rick Latterell 2007
Paul Leavitt 2001 (RCS)
Jerry Lee 1993 (Board)
Mark Lefler 2004
Harold Lewis 1995 (Board)
Michael Lohmann 2000
Mark Mann 2004 (RCS)
Stephen McGregor 2005
Jim Murphy 1988 (RCS)
Rob Neighbour 1992
Yoshi Nishio 1999 (RCS)
Ron Norberg 2002
Todd Paul 1994
Jim Perrine 1997 (RCS)
Steve Pflasterer 1987
Scott Pritchett 2006
John Quiñones 1990 (Board)
Dennis Rivard 2006
Bob Reeg 1995
Marcus Anthony Rock 2007
Craig Ruskin 2001 (PF)
William R. Sachau, Jr. 2006
Robert Seastrom 2007
Morgan Slusher 2000
Steve Spar 1996
Terry Stone 2006
Brian Tarpinian 2006
Warren Turner 1993
Mark D. Uhen 2007
Tom VandenBosch 2005
Andy Van Etten 2006
Lyn Van Noy 2002 (RCS)
Austin Vines 2004
Brian Walther 2003 (RCS)
Jim Weinstein 2006
Terry Welling 2005
Barrett Whitener 1998
Dennis Williams 2004
Paul Wilson 2006
Paul Winters 2000

(SL) Section Leader
(PF) Potomac Fever
(RCS) Rock Creek Singers

IN MEMORIAM

Kenny Aaron
Jan Albright
Tom Avenmarg
Chuck Bailey
Nelson Bain
Bill Barry
Bob Bester
Michael G. Bohn
Craig R. Bowen
C. David Bury
Ted Butler
Jim Campillo
Bill Carwithen
Randy Cooke
Daniel Coombs
Tom Dudley
Bob Edwards
Richard Fromm
Oscar Garcia-Vera
Ciro J. Graziano
Peter Griffith

George Guarino
Barry Hahn
Roger Harlow
John B. Henderson
Scott Herring
Jim Hix
Michael Hodje
R. Andy Horsley
Joe Houle
Gary L. Janus
Jim Jochen
Gary Johnson
Dan Jones
Willis R. King
William Kranick
Steven LeBlanc
Wayne Longest
Steve Maddox
Christopher Marquis
Leonard Matlovich
W. Myron Maye

James McCann
Tim McDonough
Jim Meany
Mark Mennel
Jim Moore
Phil Moss
David Nieto
Norman Nusinov
Ron O'Leary
Len Padgett
Ron Paglia
Rex Paul
Todd Payich
Scott Pierce
Don Poe
Harlan Powell
Harry B. Powers
Terence Powers
H. Glenn Privette
Dennis Quinn
R.J. Quinn

Robb Rexroth
Ric T. Rice
Jim Richardson,
 Founding Director
Tom Roeder
Larry Ross
Tom Sena
Charles L. Sens
Ray Siefer
Brian Smith
B.J. Sobus
Jason Stelling
Dennis Swick
James D. Vranekovic
Phil Walsh
Benedikt Wassmuth
Dennis Watson
Marvin Weeks
Donald Wolfe
R. Terry Woll
Bob Wonneberger

Foundry United Methodist Church



All People Are
Welcome
Here.


Foundry United Methodist Church
A Reconciling Congregation

1500 16th Street, NW • Washington, DC 20036

(202) 332-4010 • (202) 332-4035 (fax)

EMAIL: foundryumc@foundryumc.org

WEB: www.foundryumc.org



Let us help you protect your family.

Wills, Trusts, Probate & Estate Planning

Adoptions, Domestic Partnership
Agreements & Family Law

Employment Law & Discrimination

Emphasizing excellence in lawyering, personal attention, and sensible fees.



LIPPMAN, SEMSKER & SALB, LLC

founded in 1972

301-656-6905 www.LSSLAWYERS.com

AV-Rated® by Martindale-Hubbell

Presbyterian

churches salute GMCW

The following churches are committed to full GLBTQ affirmation in the life and ministry of the church. Those marked by an asterisk (*) are members of *More Light Presbyterians* organizing to change denominational policy.

Bradley Hills	6601 Bradley Blvd., Bethesda, MD 301-365-2850
Clarendon*	1305 N. Jackson St., Arlington, VA 703-527-9513
First	601 N. Vermont St., Arlington, VA 703-527-4766
New York Ave*	1313 New York Ave, NW, Wash., DC 202-393-3700
Pilgrims*	2201 P Street, NW, Washington, DC 202-387-6612
Oaklands*	14301 Laurel-Bowie Rd., Laurel, MD 301-776-5833
Takoma Park*	310 Tulip Ave., Takoma Park, MD 301-270-5550
Saint Mark	10701 Old Georgetown, Rockville, MD 301-530-0600
Western*	2401 Virginia Ave., Washington, DC 202-835-8383
Westminster*	400 I Street, SW, Washington, DC 202-484-7700



There's No Place Like Home !

Call a Real Estate Professional
Steve Pflasterer
202-339-8091

RE/MAX®

Allegiance

Licensed in DC, MD & VA



1720 Wisconsin Avenue, NW
Washington, DC 20007

Email: steve@stevepflasterer.com

www.stevepflasterer.com

20 Year Singing Member of GMCW

**COLDWELL
BANKER**



RESIDENTIAL BROKERAGE

WILLIAM (BILL) MURPHY

*REALTOR. LICENCED IN DC, MD & VA
THE PHYLLIS JANE YOUNG GROUP*

(202) 288-3107 Direct-DC

(703) 901-9804 Direct-VA

(202) 547-3525 Office

wcmurphy@hotmail.com

*605 Pennsylvania Avenue, SE
Washington, DC 20003*

Independently Owned and Operated by NRT Incorporated



FEDERAL CITY PERFORMING ARTS ASSOCIATION, INC.

Board of Directors 2006 – 2007

Greg Kubiak	Chair
David Streit	Vice-Chair
Jerry Lee.....	Treasurer
Kathy McGee.....	Secretary

Stephen Bennett, Russ Capps, Suzette Derreverre, Jack Gerard, Larry Guillemette, Rob Hall, Howland Hartley, Steve Herman, Michael Hill, Steve Katsurinis, Harold Lewis (Development, ex officio), Rob Mahaffey, Dan Patton, Paul Pompeo, John Quiñones (Chorus President, ex officio)

Administrative Staff

Robert Johnson	Executive Director
John W. Sykes	Marketing Manager
Rachel M. Williams.....	Administrative & Business Manager

GMCW Leadership

John Quiñones	President
Todd Paul	Vice President for Membership
Rob Driggers	Vice President for Events
Dan Patton.....	Vice President for Communications
Joe Vignali	Executive Producer

Membership Team and Section Leaders

Todd Paul	Vice-President
Ed Oseroff	Auditions Coordinator
Bob Klein	Support
Larry Rosen	Support
Richard Dew	Tenor 1
Alex Ford	Tenor 1
John O'Brien	Tenor 2
David Robinson	Tenor 2
PJ Brennan.....	Baritone
Steve Rappaport.....	Baritone
Michael Brinkman	Bass
Marcus Brown	Bass

GMCW Coordinators

Mark Hennen	Chorus Care Corps
Michael H. Hart	Community Outreach
Dan Patton, Steve Ranger.....	Members' Website
Corey Bent, David Edmiston	Listserv
Ron Kludo	Music Library
Kathy McGee, Marsha Holloman	Merchandising

LINDA LOW Realtors

TO THE HUNDREDS OF CLIENTS AND FRIENDS WHO HAVE
ENTRUSTED US WITH THE SALE OR PURCHASE OF THEIR HOME,
THANK YOU.



LINDA LOW *Realtors®*
Top 1% Nationally
Licensed DC, MD & VA
Brokered by
Long & Foster Real Estate, Inc.

SPECIALIZING IN HISTORIC AND OTHER
FINE PROPERTIES OF DISTINCTION

Direct: 202.232.4733
Office: 202.363.1800
LindaLowRealtors.com



Rehoboth Beach Real Estate



Prudential

Gallo, REALTORS®

702 Rehoboth Avenue,
Rehoboth Beach, DE 19971
302-227-6101

\$1,299,000



**New Construction in
North Rehoboth**
Gourmet kitchen 4 master
bedrooms w/full
bath! Professional landscaping.
Operable cedar shutters, cedar
decks, irrigation system plus so
much more. A must see!!!

\$359,900



Excellent value
Walk to town and the beach
from this fabulous 2bd/2ba
end unit, exquisitely
furnished. Completely
renovated! Parking & pool

*READY TO BUY YOUR BEACH HOME?
GET IT TODAY WHILE THE INTEREST RATES ARE
STILL LOW. LET ME HELP YOU FIND THAT
PERFECT PLACE BEFORE SUMMER GETS HERE!*



JOHN BLACK 302-249-6922 (cell)
johnblack@meetjohnblack.com
www.meetjohnblack.com



CIRCLE OF EXCELLENCE

Circle of Excellence Awards are chosen annually by members of GMCW to recognize the outstanding contributions made by members of the Chorus, including paid music and administrative staff, the support section and the Capital Circle. These awards honor those individuals who have exemplified the spirit of camaraderie, brother- and sisterhood and community in the Chorus and whose work has had lasting impact over many years.

1991

Fred Boykin
Jeffrey Buhman
Tom Dudley *
Steve Herman
Jim Holloway
Steve Maddox *
Dr. Jim Richardson
Ron Sabacek
B. J. Sobus
Bruce Trinkley
Everett Waldo
Bob Wonneberger
Michael Ziskind

1992

Michael Bohn
Eric Korpon
Darrell Netherton
Harry Powers
Michael Rivard
Rick Rosendall
David Sisson
Duward Sumner

1993

Craig Bowen *
Peter Brayton
Phil Rogerson

1994

Rod Fiorito
Scott Pierce *
David Streit
Robert Wheeler

1995

Darrell Lewis
Len Padgett
Jim Peterson

1996

Michael Baker
Roger Bergstrom
Dick Dorr
Dennis Swick *

1997

Jack Gerard
Charlie Merk
Michael Milano
Gary Regan

1998

Kevin Doss
Robb Rexroth
Larry Rosen

1999

Jerry Carpenter
Bob Dragoset
Thom Gibb

2000

Christopher Grieder
Gary Turner
Joe Vignali
Marvin Weeks

2001

Joe Cannon
Teddy Guerrant
Steven Haber
John Perkins
Michael B. Smith

2002

Carl Baldwin
Barry W. Bugg
Michael Cunningham
Dan Patton
Todd Paul

2003

Tom DiGiovanni
Rick Johnson
Kathy McGee
Chuck Walker

2004

Scott Button
Robert Klein
Jerry Lee
Harold Lewis
Jack Reiffer

2005

Jeff Van Luyn
Stuart Kopperman
Edward P. Oseroff

2006

David Bielenberg
Joe Canter
Bill Cutter
Matt Komornik
Barrett Whitener

**Awarded posthumously.*

To get into
MUTUAL FUNDS,
get in to see a
MUTUAL FRIEND.

When it comes to investing, turn to someone who's been there for you all along. Ask me how to get started today with State Farm Mutual Funds.*



Mutual Funds

LIKE A GOOD NEIGHBOR, STATE FARM IS THERE.™

State Farm Mutual Funds are offered through prospectus by registered representatives of State Farm VP Management Corp., One State Farm Plaza, Bloomington, Illinois 61710, 1-800-447-4930. Please read the prospectus and consider the investment objectives, risks, charges and expenses and other information it contains about State Farm Mutual Funds carefully before investing.
Consult your tax, legal or investment advisor for specific advice.



Jonna S Wooten
Registered Representative
Bus: 703-560-7804

P02976 04/04

STEPTOE & JOHNSON LLP

Washington
New York
Phoenix
Los Angeles
London
Brussels

Step toe & Johnson LLP is proud to support the Gay Men's Chorus of Washington, DC

www.step toe.com

COMMUNITY OUTREACH

GMCW actively supports the gay community and the community at large by sharing our gifts, experiences and talents. Through our community outreach activities we seek to enlighten, educate and enrich the lives of others. In the spirit of this year's season, "A Celebration of Family," we have dedicated additional resources to outreach by creating a Community Outreach Committee which provides strategic planning and general coordination of our efforts. Here are some examples of GMCW's community outreach:

FOOD & FRIENDS

The kick-off project for the Chorus's new Community Outreach Committee involved committing ourselves to Food & Friends by providing a steady stream of volunteers to this worthy organization. GMCW provides 6-8 volunteers two evenings per month.

TOY DRIVE

Each December, GMCW hosts a toy drive, collecting more than 500 new toys for under-privileged children in the Washington, DC, area. The tradition, begun by late founding member Bob Wonneberger, has become an annual Chorus event. Toys are distributed through Community Family Life Services. To complement our toy drive, the Chorus also adopted four families (one for each musical section) to help provide targeted holiday gifts for families in need.

AIDS WALK

This fall GMCW expanded its participation in the annual AIDS Walk. Chorus members raised more than \$17,000 for Whitman-Walker Clinic and formed the third most successful fundraising team of this event. The Chorus also sang the national anthem as part of the morning's festivities.

OUTREACH PERFORMANCES

Over the past several years, the Chorus has reached beyond the borders of the city and performed for new audiences and rural gay communities. Audiences at Montgomery College, Carroll County Community College and Frostburg State University have all welcomed us to their campuses in recent years. Most recently, the Chorus performed on May 20, 2007, as part of the 25th anniversary celebration of the Steven Kaufman AIDS Outreach Project, established in memory of Steven Kaufman by his family. The project, located in Baltimore, offers education and outreach to raise community awareness about HIV/AIDS. Plans are in place to perform at James Madison University in Harrisonburg, VA, on September 15, 2007.

NIGHT OUT AT THE NATIONALS

GMCW sang the national anthem at RFK on August 8, 2006, as part of Team DC's Night Out

at the Nationals II. We will be performing again for Night Out III on July 16, 2007. Team DC is an organization established to encourage and support involvement in team and individual sports within the GLBT and broader community in the Washington metropolitan area.

CHRISTMAS CAROLING

Each Christmas Eve, members of GMCW visit the National Institutes of Health to sing carols for patients and staff to make their holiday brighter.

ANNUAL MLK, JR. CELEBRATION

GMCW participates in an annual celebration of the life of the Rev. Dr. Martin Luther King, Jr. This event is co-sponsored by the GLBT Arts Consortium of Washington, DC, and Capital Pride.

CLOTHING DONATIONS

Members of the Chorus have made extra room in their closets this year by donating their gently used clothing to Martha's Outfitters and The Store at New York Avenue Presbyterian Church (GMCW's rehearsal home). Clothing is distributed free to those in need.

CAPITAL PRIDE

Each June, GMCW participates in the Capital Pride Parade and performs as part of the Capital Pride Festival.

STUDENT TICKET FUND

GMCW encourages high school and college students to attend Chorus performances by making free and discounted tickets available in coordination with Gay/Straight Student Alliances and other student groups.

BENEFIT SUPPORT & PERFORMANCES

The Chorus regularly supports and performs at events for other area not-for-profit organizations, such as the Human Rights Campaign, Whitman-Walker Clinic, Cultural Alliance of Greater Washington, the Mautner Project for Lesbians with Cancer, Community Family Life Services, HERO, Sussex County AIDS Commission, PFLAG-DC, Food & Friends, NOVAM and Servicemembers Legal Defense Network.

Sing from the rooftops!

And if that doesn't work, try direct mail.

EU Services is proud to support
The Gay Men's Chorus of Washington, DC.

Printing, personalization and mailing services
649 N Horners Ln . Rockville, Maryland 20850

EU SERVICES

Visit us online at www.euservices.com or call us toll-free at 1.800.230.3362.



grillfish

Dinner, Nightly, 5 pm
Lunch, Mon-Fri, Noon to 4 pm

1200 New Hampshire Ave, NW (Corner NH & M St) Washington DC
tel 202.331.7310 www.grillfishdc.com

Logan
tavern

a neighborhood restaurant & bar

Dinner, Nightly, 5 pm
Lunch, Mon-Fri, Noon to 5 pm
Brunch, Sat & Sun, 11 am - 4 pm

1423 P St. NW (Across from Whole Foods) Washington DC
tel 202.332.3710 www.logantavern.com



Mon-Fri, 5 pm, Sat & Sun, 4 pm
Brunch, Sat & Sun, 11 am - 3 pm

1443 P St. NW (Across from Whole Foods) Washington DC
tel 202.299.0018 www.merkadodc.com

The Heights, 14th & Kenyon, NW, Opening Spring '07



eatwelldc



The Gay Men's Chorus of Washington, DC's Ovation Society

GMCW's **Ovation Society** is an initiative that recognizes and honors those individuals who have made planned gifts to the Chorus.

A number of GMCW family members have already made plans to contribute a portion of their estate to the Chorus. The **Ovation Society** is a way we can recognize those individuals for their generosity.

If you have already included GMCW in your estate plans, please let us know so we can include you as a member of the **Ovation Society**.

If not, we hope you will consider joining this special group of individuals by including GMCW in your will, as a beneficiary of a retirement account or by setting up a charitable trust. In some cases, planned gifts allow you to control where much of your estate will go, rather than to the federal government. Charitable gifts can greatly reduce the amount of tax paid by your estate at the time of your death and often do not change the amount that would go to your family and friends.

Your own attorney or accountant can provide you with more information on the many ways you can set up an estate gift to the Chorus. There are also a number of professionals who know the Chorus well and can advise you on the options that might best suit your situation. And remember, you don't need to be a millionaire to do this — many charitable gifts are made through estates valued at only a few hundred thousand dollars.

As a member of the **Ovation Society** your name will be included in a special listing in each concert program. You will also be invited from time to time to attend special events and receptions especially for **Ovation Society** members. And **Ovation Society** members will receive a special pin, recognizing their planned gift to the Chorus.

For further information about GMCW's **Ovation Society**, if you are interested in learning more about the many ways you can include GMCW in your plans or if you would like the names of some professionals who can assist you in doing so, please contact the Chorus at 202.293.1548.

COME AND VISIT A WASHINGTON INSTITUTION—SINCE 1958.
EXPERIENCE THE TASTE OF:



THE SECRET
IS IN THE SAUCE!

BREAKFAST:
Mon-Sat: 6am-11am

REGULAR MENU:
Mon-Thurs: 11am-2am
Fri-Sat: 11am-4am
Sun: 12 noon-8pm

1213 U ST. N.W. – (202) 667-0909

SPURGEON – LEWIS ANTIQUES

Period American and European Furniture
and Appropriate Accessories
Period Lighting and Custom-Made Reproduction Chandeliers

112 North Columbus Street
Alexandria, VA 22314
(In The Heart Of Old Town)

Wednesday – Saturday 11 to 5 • Sunday 12 – 5
Closed Monday and Tuesday through March

Phone 703-548-4917 • Toll Free 877-548-4917
spurlew@comcast.net • www.SpurgeonLewis.com

John Jenkins • Tom Osborne • Paul Bavis

Lauriol Plaza
Restaurant



Lauriol Plaza Restaurant

1835 18th Street, N.W. 202-387-0035

Two Hours Free Parking
available in the rear of the building

OPEN YEAR ROUND



Bold
American
Cuisine

Eden Restaurant
Supports the GMCW

EDEN

23 ballimore avenue
rehaboth beach, de 19971
302.227.3330
www.edenrestaurant.com

One-on-one
training,
located in
Tysons Corner.

studi**o**  b
-||FITNESS||-

DC Metro: 703.356.4006
info@studiobfitness.com
www.studiobfitness.com



**The best deal on a Volvo or VW
is right in your neighborhood.**



Conveniently located in Northwest DC between Tenleytown and Friendship Heights,
Martens is the **only** Volkswagen and Volvo dealership in Washington!



MARTENS



4800 Wisconsin Ave. N.W. 202-537-3000

www.MartensCars.com

GMCW DONOR LIST

The Gay Men's Chorus of Washington, DC, is grateful to the following individuals and organizations who support the Chorus and its many activities. The gifts listed here are cumulative from September 1, 2006 – May 7, 2007, and include Annual Fund gifts, Capital Circle contributions and support for special projects and sponsorships. Thank you!

SUSTAINER (\$10,000 – \$24,999)

Stanley Allen & Thomas Smith
Americans For The Arts
Noi Chudnoff, Go Mama Go!
DC Council for the Arts & Humanities
Alex Ford & Steve Toporoff*
Jack H. Gerard
Rob Hall
Steve Herman & John DiBenedetto
Paul J. Kuntzler & Stephen Brent Miller (late partner)

GUARANTOR (\$5,000 – \$9,999)

Stephen Bennett & Craig Ferrier
Wynn Bressler & Harold Lewis
Harman Family Foundation
Michael E. Hill & Michael W. Bigley
Jerry Lee, Joe Vignali & Chris Asaro
Kathleen McGee & Marsha Holloman
Paul E. Pompeo
David Streit & Scott Button
Volkswagen of America, Inc.+

PACESETTER (\$2,500 – \$4,999)

American Airlines+
Annie's Paramount Steakhouse+
C. Michael Baker
Carl Baldwin & Gary Turner
Russ Capps & Kenneth Yazge
Suzette Derrevere & David Lietz
Virginia Grieder
Howland Hartley & William Lee
Andrew J. Hoffmann &
David T. Wyncott

Melbourne Jenkins & Juan Febles
Stephen Katsurinis & Brian Walther
Katha Kissman
Greg Kubiak & Joe Canter
John Quiñones
Scott Reiber & Rusty Smith
William Edward Senn
Jim & Barbara Tozzi
Robert Winter & Andrew Cordonnier

Our Agents Know and Live
in Your Neighborhoods

privateproperties



*Over 25 Years Of Providing The Community With
Expertise, Integrity, And Personal Service.
Customer Satisfaction Is Our Business.*

private properties inc. • 202.232.3500
1818 18th street nw washington dc 20009

**residential real estate brokerage and
property & condominium management**



John C.
FLOOD Inc.



We do it all.

Plumbing • Heating • Air Conditioning • Electrical • Heat Pumps

DC: 202-333-8229 MD: 301-779-0300 VA: 703-914-1800



Merrifield Garden Center

WHERE BEAUTY BEGINS

The Finest Quality Plants

Trees • Shrubs • Perennials • Annuals
Unique Varieties • Specimen Sizes

Award-Winning Landscaping Services

Creative Designs • Patios • Walkways • Water Features
Landscape Structures • Irrigation Services • And More!

Experienced Nursery Professionals

For great gardening ideas, don't miss

"MERRIFIELD'S GARDENING ADVISOR."

Our weekly TV show airs every Saturday at 8 a.m. on NewsChannel 8

MERRIFIELD LOCATION

703-560-6222

8132 Lee Hwy., Merrifield, VA

FAIR OAKS LOCATION

703-968-9600

12101 Lee Hwy., Fairfax, VA

www.MerrifieldGardenCenter.com



Quality & Dependable Workmanship for the DC Metro Area.

Landscaping:

- Lawn Maintenance
- Garden Design
- Installation
- Garden Renovations
- Pruning
- Stump Removal
- Edging
- Stone Walkways
- Seasonal Cleanup



versatool
SERVICES

Handyman Services:

- Painting
- Driveway Sealing
- Hauling/Moving
- Home/Room Cleanout



Ryan Masser – Owner & GMCW Member

p 202.834.0880 | 1402 West 7th St | Frederick, MD 21702 | rymass3@aol.com



ERIE

- › Auto
- › Home
- › Condo
- › Renters
- › Business
- › Life
- › Employee Benefits

ERIE's
Young
Driver
Rate
Drops
at Age 24!

SCHAEFER
INSURANCE SERVICES

over
20 years

of experience
representing ERIE
Insurance Group



Timothy D. Schaefer
An Independent Agent
representing ERIE Insurance Group
Licensed in MD, VA & DC
(301) 428-0282
Tim@SchaeferInsurance.com

**WELLS
FARGO**

**HOME
MORTGAGE**

PRIVATE MORTGAGE BANKING

Get a Strong Team to Pull for You



Joe Lagomarcino
Private Mortgage Banker

301-656-3899

joseph.lagomarcino@wellsfargo.com
www.joelagomarcino.com



Wells Fargo Home Mortgage is a division of Wells Fargo Bank, N.A. © 2005 Wells Fargo Bank, N.A. All Rights Reserved. #24262 1/28/05



**AURORA HILLS
CLEANERS**

Jimmy Jeon

774 S. 23rd St.
Arlington, VA 22202
703-836-8385
703-836-2633

Government · Schools · Corporate
Sports Teams · Family Reunions
Parties

SAM'S MONOGRAM

Shirts · Hats · Bags · Cups
Pens · Junque

(703) 866-4400 · Fax (703) 866-6184
(800) 541-0414

GMCW DONOR LIST

Continued from page 65.

Patron (\$1,500 – \$2,499)

David & Eric Akridge
Barefoot Wines+
Tom DiGiovanni & Patrick O'Donnell
Holland & Knight, LLP
Michael Hughes
Robert Mahaffey & Richard Kendall
John M. Matthews & Larry A. Sturgeon
Michael D. McElvaine
Ronald Norberg
Eugenio Ochoa Sexton
Wolf Tombe & Neil Uscier
Tim Wenz

Benefactor (\$1,000 – \$1,499)

Steven Aurecchia & William Dukstein
John F. Benton & David W. Briggs
Fred Boykin & Jack Killen
Dave Daniels & Curt Brookshire
Margaret Bergan Davis
Bob Dragoset
Lawrence Guillemette
GWU Medical Faculty Associates, PC+
Rebecca Hawes & Laurice Jones
William Helamed
Rod Howard & Scott Young
Lawrence S. Jacobs & Associates, PC+
Mr. & Mrs. Thomas W. Kelley
Wayne Kemp Vocal Studio
Stuart Kopperman & Christopher Grieder
Jina Lynne
Tom Munteer & George Farrah
NCB+
John O'Brien
Paulorin
Reveal Med Spa+
Rod and John, Coldwell Banker+
Steve & Shannon Rozner
SPC Financial, Inc.+
Alan J. Savada & Will Stevenson
Doug Sellers & Mark Eubanks
Frank A. Silverio*
Jeffrey C. Van Luyn & James R. Stanko

Sponsor (\$500 – \$999)

Anonymous

Eddie Adkins & Jeffrey Mendell
American Society of Appraisers,
In Memory of Jerry Larkins
Jim Arshem
David M. Bachman, MD
Eric F. Belkengren
Curtis T. Bell
David Bielenberg & Greg Trimble
Felix Boccadoro & Allan Halprin
Boeing*
Brad Boekeloo & Stan Drake
Thomas W. Bower
Leon J. Boyce
Butch Bradburn & Barry Huber
Joe Brookman
Michael L. Burke & Carl W. Smith
Pat & Bob Carpenter
Mike Chateaufneuf
Harvey Cohen & Michael Tardif
Larry Cohen
Chip Crews
Don DeGeorge
Howard Ducat/Jerry Larkins
Gerald J. Filbin
Michael L. Fine & Andrew Buck
H. Ralph Fletcher
Ian Gibson-Smith & David Womack
Lanette & Robert Graves
Jim Gruschus & Greg Campbell
Harold Holstein
Daniel W. Hicks & John McCall
Bill Hillegeist
Eric B. James
Michael Kahn
Dan W. Kaufman*
Keith Krivitzky
Betsy & Don Libretta
Bill Lipsett
John Lohse
John J. Masters, Jr.
David McCall & Bill Cross
Charles A. McClelland
P. Richard Melintz
Leo P. Melzer & Tilden Jio
Michael Milano & Wayne Sartis
Ronald W. Moch



**Open Door
Metropolitan
Community Church**

Rev. Dr. Rob Apgar-
Taylor, Pastor

15817 Barnesville Road
Boyd, MD 20841
301.916.5777

Services: 10:00
ASL Interpreter

Children's Programs
Sunday School
GLBT Alanon
HIV Ministry

opendoormcc.com



Jewish and GLBT?



Feeling left out on Shabbat
and Holidays?

Everyone is ALWAYS

WELCOME at



Bet Mishpachah!



www.betmish.org

Founded in 1975 by
Members of the Gay Community
Rabbi Bob Saks

Shabbat Evening Services

Every Friday 8:30 pm

Shabbat Morning Services 2nd & 4th

Saturdays 10:00 am

DCJCC 16th & Q Streets NW

**Christ
Congregational Church
United Church of Christ**

An open and affirming
congregation committed
to social justice and to
nurturing families of all
descriptions throughout
their faith journeys.

9525 Colesville Rd.
Silver Spring, MD
301-585-8010
www.christ-ucc.org

God loves the whole world ...
no exceptions



St. James Episcopal Church on Capitol Hill
222 8th St. NE Washington, DC 20002
www.sjec.org
stjames@covad.net
202-546-1746

VIRGINIA PARTISANS

Gay and Lesbian Democratic Club

*Building a Broader Coalition in
the Commonwealth of Virginia
since 1992*

Visit us today at
www.vapartisans.org

Be a sustaining donor. Your monthly pledge helps us keep fighting the good fight for your rights.

POB 6243 Arlington VA 22206

Looking for something
new and exciting to do?

*How about fighting for
your rights?*



Pen us in.



Seeking Equality
for All Virginians

Join or volunteer at:

EqualityVirginia.org (804) 643-4816

BOB KENNEY

Serving
DC and Northern Virginia



REMAX/Allegiance
703.217.7023
BobK4u@aol.com



JOE O'HARA

"Serving Our Community with Care"

**Superior Marketing
&
Buyer Representation**

Visit our website today to learn
about us and the many services
we provide...before, during,
and after the transaction!



REAL ESTATE

MOBILE: (202) 352-5650
JOE@JOEOHARA.COM

www.joeohara.com

BioScrip is proud to support the GMCW!



For close to 20 years, BioScrip Pharmacy (formerly StatScrip) has been a leading provider of community-based pharmacy services for people living with HIV/AIDS.

bio scrip
PHARMACY

1325 14th St. NW
Washington, DC 20005
P: 202-332-8811
TF: 1-866-490-5046

ALPHA DRUGS PHARMACY

The pharmacist you know.
The CARE you deserve.™

Peter Metaxotos, R.Ph.
Director of Pharmacy
Certified HIV/AIDS Pharmacist

1638 R St. NW, Suite 1
Washington, DC 20009

202.265.7979 Tel
202.265.0588 Fax
pmetax@aol.com

9am-6pm M-F; 10am-2pm Sat.; Closed Sun.

CAPITOL VIDEO SALES

Congratulations to
the Gay Men's Chorus
from the staff of
Capitol Video Sales

514 8th St., SE, Wash., DC 20003
202-544-2808

2028 P St., NW, Wash., DC 20036
202-467-4361

1729 Conn. Ave., NW, Wash., DC 20009
202-265-9226



One West Eager Street
(in the Mount Vernon District)

Dance Club
Pub ~ Videos
Special Events

Call 410-547-0069 for info
or visit
www.clubhippo.com

GMCW DONOR LIST

Continued from page 69.

Sponsor (\$500 – \$999)

Terry O'Brien & Jack Musser
Mel Odilao
Dan Patton & Steve Ranger
Steve J. Pflasterer
Dr. Stan Piotroski
Wendy Raines
Steve Rappaport
Dr. Michael Relf & Shawn McKenna
Nan Robertson
Mimi Schneider
Rob Serpa
Mark Uhen
Andrew Van Etten
The Washington Post*
Stanley H. Watters
Mike Weber
Jim Weinstein
Clint Williams & Jim Mears
Nancy & Marc Williams
Mark Young
Michael D. Ziskind & Jeffrey P. Davis

Friend (up to \$499)

Anonymous (4)
Robert M. Agnello & Gerard H. Pape
Tim Allmond & Bob Klein
Emerito Amaro-Carambot
Terrence Applebee
Dr. Bill S. Ashley
Sherri Bale & Eric Spears
Jay R. Ball
Justin Bank
Dr. John L. Batchelor
Jeremy Bauer
Franklin Baxter
Tom Bell
J. Roger Bentley
Joseph Berlin
Don Bessette
Billy and Byron
Joe Bloomer
Thomas Charles Boeke
Michael Bonilla
Bennett Borden
Bill Boyer & Taylor Bowlden
Anne Bracken

Lorna I. Brade
Jason Bricker
Michael P. Brinkman
Jeremy Brumbelow
Kevin Buck
Bo Bullock
Charles R. Butler, Neto
Glenn Cadoret
Paul Campbell
Joe Cannon
Marsha & James Canter
Phillip Carson
H. Jack Carver
Antonio Casanez
Edgar Casas
Aaron Casey
Tanja Castro
Gerald & Margaret Chadburn
Greg Chittick
Daniel Clavel
Rose Ann Cleveland
Chris Cochran
Ted Collins
Paul Colloton
John Emerson Court
Laura Covington
Kenneth Currier
Bill Cutter & Gilles Gobert
Peter Daub
Bob Davidson
Caroline Davis
Giuseppe DeBartolo
Peter DeBraul
Daniel J. Demers
Thomas B. DePriest
Richard Dew & Ricky Culp
Peter Dewey & Chris Gray
Elizabeth Dooghan
Jill Dougherty
Charles M. Dragovich
Rob Driggers
Jim Dudley
Dufour, Laskay & Strouse, Inc.
Justin Estoque
Tessie Estoque-Myint & Ohn Myint
Linda & Robert Ewald
Robert J. Featherstone

* = Matching gifts † = Corporate Circle

★ AMERICA ★
AT UNION STATION

**15% off
with this ad**

50 Massachusetts Avenue
Washington, DC 20002
(202) 682-9555
Fax (202) 682-0347

**Making Changes,
Adding Flavor**

Skewers Upstairs Coming Soon!
Enjoy live entertainment & dinner
on Fridays & Saturdays.


SKEWERS

Middle Eastern Restaurant & Bar
Private Dining Room for Large Groups
202-387-7400

Downstairs


Cafe Luna

"One of Washington's 50 best brunches"
202-387-4005

1633 P Street NW • Dupont Circle
skewers-cafeluna.com • Dinner Parking Daily til Midnight

U-TOPIA
art & eat

open late

*is proud to support
The Gay Men's Chorus of
Washington, DC*

*Lunch-Brunch-Dinner
Sunday brunch a la carte
starting from \$5.95
\$1 Mimosa, O.J., Bloody Mary*

Jazz & Blues

*1418 U St., NW,
Washington, DC 20009
(202) 483-7669
U Street (Cardoza Metro)*


**Café
La Ruche**

Georgetown's Oldest French Bistro

*1039 31st Street, NW
Washington, DC 20007
(202) 965-2684*

**Bonnie M. Beamer,
D.D.S.**

Practice Limited to
Periodontics

1712 Eye Street NW
Suite 202
Washington, DC 20006

202. 331.1746

www.dcperiodontist.com

**MICHELE ZAVOS
LAW GROUP, PLLC**

Michele Zavos
Emily L. Russell
Nan Hooven

202.832.4186
mzavos@
zavoslawgroup.com
zavoslawgroup.com

*Creating legal
protections for
you & the family
you choose*

CAFE BERLIN
On Capitol Hill



**Join us for our
Special Season Menu**

**Homemade Pastries
German and American
Specialties**

322 Massachusetts Avenue, N.E.
Washington, DC 20002

(202) 543-7656

www.cafeberlindc.com

*To the GMCW
from the*

SANTA FE CAFE

Your voices
guarantee
audiences
a
"howling
good
time"!



**1500 Wilson Boulevard
Arlington (near Rosslyn Metro)
703-276-0361**

*Home of great margaritas
and zesty New Mexican fare.
Dinner Tuesday - Saturday*

www.santafecafe.com

David O. McCall Phd



- Individual, couple and group therapy

1660 L. St., N.W., Suite 503
Washington, D.C. 20036

Phone: 202-728-1166
Fax: 202-728-0560
www.davidomccall.com



CENTRAL WASHINGTON
PSYCHOTHERAPY ASSOCIATES

PSYCHOTHERAPY AND JUNGIAN ANALYSIS

Counseling & Psychotherapy
Imago Couples Therapy
Jungian Analysis

Sliding scale available
Dupont Circle & Bethesda
Days, Evenings & Weekends



Robert Sheavly,
LCSW, DCSW DIRECTOR

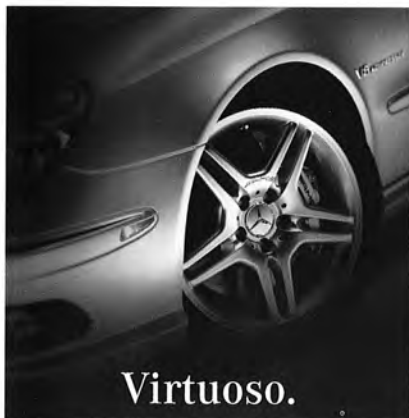


Sheri Rosenfeld,
LCSW



Alan Friend,
M. Div., Dipl. Psy.

www.DCpsychotherapy.com • 202 232 4900



Virtuoso.

Quite simply, we are the maestros of all things Mercedes. Visit us today for a lesson in automotive luxury and unsurpassed service.

 American Service Center

Arlington, VA | 800.745.1713
JustMercedes.com



*Congratulations to GMCW
for 26 years of
musical excellence -
and many more!*

202.337.7718 • 800.222.9800
1025 Thomas Jefferson St. NW
www.passportexecutive.com
paul@passportexecutive.com

GMCW DONOR LIST

Continued from page 73.

Friend (up to \$499)

Rosalind Flynn
Brett Fox
David Fox
Alan Gambrell
Stuart Goldstone
Martin Good
Paulette Goodman
Rodney Gould
Mark Graboyes
Matt Graff
David Gregory
Debra Gross-Tozer
Mark Gustafson
Harry Hagel
Louise T. Hall
Andrew Harmon
Phill Harris
Rich Harrison & Steve Johnson
Michael Hart
Jay Haverty
Willis Hayslett
Camille Hazeur
Gerard Heller
Mark Hennen
Bob Hilby
Michael Hillegas
Charles E. Holland
David W. Holmes
Donald Horn
George Huffman
IBM Matching Gift Foundation*
Lawrence S. Jacobs
Robert Jacobs
Robert Johnson
David Jonas
Jimmy & Yvonne Jung
Lee Kadrich
Thea Kano
Todd Katschke
Allen Keiswetter
Helen Kelly
Paul Kelsch
Liz & Fred Kestler
Dianne & Robert Kinkead
Rob Kleinstauber
Fred Krebs
Nicholas Kyrus & James Holloway
David A. Lamdin
Peg Lanagan
Grant Kevin Lane
Bernard Langeluttig
John Laster
Paul Leavitt
John M. LeBedda
Liz Leith
Randy Lewis
Joseph Lipani
Susan Lissner
Josh Lomon
Helene Madonick
George Magee
Sterling Malcolm
Michael Mandel
Mark Mann
J. Thomas Marchitto & Shawn C. Helm
John Martin
Donald McArthur
Shannon McGahey
Pat McGlone
David McKinney
William McKissock &
Edward Wooldridge
Elizabeth McQuat
Jeremy D. Meadows
Reginald Meneses
Phillip Moore
Ralph Moore
John Moran
Dale Mott
Doug Murphy
Harley C. Muse
Rich Myers
Kerry K. Neal
LaFonte Nesbitt
Bill Nickel
Yoshiyuki Nishio
Patricia O'Brien
Beth O'Callaghan & Marla Aizenshtat
Patrick O'Keefe
Christiana Olsen
Edward P. Oseroff

* = Matching gifts + = Corporate Circle

Continued on page 81.

A & D Custom Framing, Inc.

Museum Framing

Museum Glass • French Matting

22K Gold Hand-Carved Framing

Mirror Framing

Restoration of Oil Paintings and Frames

(703) 556-9777

McLean, Virginia 22101

NEWMAN GALLERY & CUSTOM FRAMES

Conservation Framing
Custom Mat Design
Quality Craftsmanship
Gift Certificates

**serving Capitol Hill
since 1984**

513 11th St, SE
Washington, DC
202-544-7577

www.newmangallery.com

ILLUMINATIONS, INC.

Classics of Contemporary Lighting Since 1982



415 8th Street NW
Washington, DC 20004
202.783.4888

2232 Cady's Alley NW
Washington, DC 20007
202.965.4888

www.illuminc.com

Piano Tuning, Repair, Regulation
Humidity Control Systems
Appraisals



Since 1981

Donald P. Chandler

Registered Piano Technician



1908 Tupello Place
Crofton, MD 21114
410-451-4366

Toll Free (MD-DC-NOVA):
1-877-723-9257

E-mail: ddpctuner@aol.com

BACKSTAGE INC.
"THE PERFORMING ARTS STORE"



545 8TH STREET SE
WASHINGTON DC 20003
(202) 544-5744
BACKSTAGEBOOKS@AOL.COM

THEATRE BOOKS, SCRIPTS,
THEATRE MAKE-UP, POSTERS,
COSTUMES FOR SALE & RENT, DANCE
WEAR & SHOES, GIFTS,
KIDS COSTUMES, ACCENT TAPES,
MASKS & MORE...

**Looking for a
Physician?**

**Metropolitan
Medical Center**

Richard A. DiGioia, M.D.

*Specializing in:
Internal Medicine
HIV/AIDS Management*

*2112 F Street, N.W., Suite 603
Washington, DC 20037
(202) 331-1042*

*Participation with many
insurances*

DC LAMBDA SQUARES



High-Energy GLBT Square Dancing

Dancing Thursday Nights
in Dupont Circle

- Community Dances
 - Fly-Ins
- Beginner Class starts in Spring 07
 - Pot-lucks

Information at:
www.dclambdasquares.org

*Square Dancing – Friendly,
Social, Sexy, Hip*



**Olde Towne School
for Dogs**

Dog Day Care Training
Puppy Head Start Program
Private Lessons at School

Visit us at www.otsfd.com

Since 1975 the area's finest
Dog Training School

529 Oronoco St.
Alexandria, VA 22314
(703) 836-7643

Love Your Body

Call us today to schedule your free
consultation and complimentary
laser treatment

BODY LASER CENTER

Laser Hair Removal
Safe • Fast • Effective • Affordable

703.281.5800

www.BodyLaserCenter.com

contactus@bodylasercenter.com

386 Maple Avenue East • Suite 204
Vienna, VA 22180



LEATHER RACK
LLC

LEATHERRACK.COM

1723 CONNECTICUT AVENUE NW
202.797.7401



GOLD WORKS

David Martin Design

**Your concept.
Our craftsmanship.**

Come to Gold Works to create your own custom
designed jewelry. To express your love for
someone special, there is no better plan than
to commission a unique piece of jewelry, have
it custom made by a master craftsman, and
present it at just the right moment.



1400 King St., Alexandria, VA
703.683.0333 • goldworksUSA.com



DC EAGLE

**OPEN 4PM M-F
NOON SAT. & SUN.**

WWW.DCEAGLE.COM

639 NEW YORK AVE., NW
WASHINGTON, DC 20001

202-347-6025

ONE BLOCK SOUTH OF
MT. VERNON METRO
@ 7TH & M ST. ON THE YELLOW/GREEN LINE

GMCW DONOR LIST

Continued from page 77.

Friend (up to \$499)

James F. Padgett
Rhonda Panciroli, In Memory of
 Jerry Larkins
Todd Paul & Jonathan Willen
Charles Peel & Monty Wing
Babette Pennay & Sandra Douglass
Robert J. Petza & Anton V. Esposito
Nick Pietras & PJ Brennan
Jayme Pittsonberger, In Memory of
 Jerry F. Larkins
Paul Plattner, in memory of Nelson Bain
Larry Poole
Nancy Rappa
Ned Read
Bob Reeg
Rachelle R. Reeg
Gary M. Regan
Bill Rice
Steve Crutchfield & Richard Ormseth
Stephen Richard
Jason Rickert
Dennis Rivard & Charles George
TJ Rivetti
Max Rodriguez
Mary & David Rogerson
Roberts & Lydia Rogerson
Peter D. Rosenstein
William R. Sachau, Jr.
Steven Sanders & Michael Phelps
Todd & Laurie Saunders
Douglas & Elizabeth Scheffler
Hank & Charlotte Schlosberg
Elsie Schneider
Brian Schulli
Brian Scott
John Seichter
Jason Setree
Robert Sheavly
Barry M. Sherbal
Stuart Sibel
Fred Silbernagel & Doug Cardin
Robert Smith
Brett A. Snyder & Jason S. Forman
Scott Spahr
Steve Spar
Terry Stewart
Charles Stogoski
Harvey Stoler
Terry Stone
Sarah Strom
John Winton Sykes
David W. Talmage
AJ Tepe
Henry Thomas & Kevin Litschgi
Berard Tierney & Patrick Leonard
Robert Timms
Dr. David I. Tossman
Andy Tracy
Julian Trail & John DiGiovanna
Bobbie Trent
William Trokey
Sandra Tropper
Robert Veltkamp
Anthony Vitelli
Gary Voudrie
Brad Ward
Jennifer Watkins, In Memory of
 Jerry F. Larkins
John Weibel
John White
Robert White
James Williams
Robert Wilson
Kimball Winn & Stephen O'Neill
Chuck Wolfe
Fred Woods & Bruce Hathaway
Charles Yeager
Gary Young & Jorge Zapata
Gary L. Young
Kelly R. Young
Kenneth Youngert
Lawrence Zimnoch

* = Matching gifts * = Corporate Circle

A few cool
Hardware Stores 



Logan, 1416 P St. NW

Glover Park, 2251 Wisconsin Ave. NW

Tenleytown Ace, 4500 Wisconsin Ave. NW

1409
Playbill

Café

1409 14th Street NW
Washington, DC 20005

Phone: (202) 265-3055

Fax: (202) 265-3056

Pillsbury & Company
TRAVEL PROFESSIONALS

Satutes

The Gay Men's Chorus of
Washington

1844 Columbia Road, NW
Suite 101
Washington, DC 20009
(202) 232-2737

Your Ad Here!

*You are invited to advertise
in our concert programs!*

*Market to over 8,500 sophis-
ticated arts patrons who are
very loyal to our advertisers
and the Chorus!*

**Call Gary Regan
at 703-521-6175 or**

**David Streit
at 202-368-9011.**

Very reasonable rates!

THE WONNEBERGER MEMORIAL FUND

The Robert K. Wonneberger Memorial Fund was established in 2004 as a tribute to GMCW Founding Member Bob "Wanda Mae" Wonneberger who died in October 2002. The following individuals have made contributions to the Chorus in his memory. These gifts are used to support GMCW's staged productions. Thank you!

Dennis E. Adams
Stanley Allen & Thomas Smith, Jr.
Jim Arshem
Jerry Bashore
Larry Cohen
James Kevin Costello
Don R. Dailey
James E. Dice
David M. Dolecki & Jim Carey
Peter S. Freed
Kenneth E. Garrison
Jack Gerard
Tiffany & Robert Green
Jack Grubbs
Paul D. Guidi
Steve Herman & John DiBenedetto
Mazie Green Holland
Robert W. Holleyman
James Holloway
& Nicholas Kyrus
Melbourne Jenkins & Juan Febles

Ronald J. Koshes & Joseph J. Wolfe
Greg Kubiak & Joe Canter
Gail & Larry Landgraaf
David O. McConnell
Kathleen McGee
& Marsha Holloman
Constance Mercer
Joseph R. Michael
John Moran
Robert Mitchell / R.G. Mitchell
Group, LLC
Steven Ranger & Dan Patton
Jack Reiffer
Philip Rogerson
Richard J. Rosendall
Elsie Schneider
Douglas Sellers & Mark Eubanks
Carl W. Smith & Michael L. Burke
Duward F. Sumner
Jim Turner & Gary L. Webber
Donald Lewis Wright

THE CENTURY CIRCLE FUND

The Century Circle Fund was established in the fall of 1999 to honor GMCW's past and to ensure its future fiscal health. Donors to this initiative pledge to contribute \$1,000 or \$2,500 over a two-year period. The fund is used in consultation with the Board of Directors for purposes that advance and ensure the financial stability of the Chorus. We wish to sincerely thank the following donors to the Century Circle Fund:

Jim Arshem
John F. Benton & David W. Briggs
Fred Boykin & Jack Killen
Peter R. Brayton
Robert H. Brown
Warren Buckingham &
Rev. Cannon Ted Karpf
Scott Button & David Streit
Chuck Carr & David Taylor
Harvey Cohen & Michael Tardif
Mike Deegan
Robert Dragoset
Jay Gandy & John Cochran
Drs. William E. Gannon, Jr. &
K. David Weidner
Jack H. Gerard
Thom Gibb

Rev. Robert E. Hensley &
SSgt. Michael W. Helgert, USAF, Retired
Steve Herman & John DiBenedetto
John Hohl
Dr. Ron Koshes
Hardee Mahoney & Juan Vegega
Kathleen McGee & Marsha Holloman
John E. Perkins
Bob Reeg
Tom Regan
John Roncz
Laurence A. Rosen
Ron Sabacek & Steve Haught
James S. Shaffer
J. Warren Turner
Robert E. Winter

cheddar

Take home the

that keeps
taking home
the gold.

For over 85 years, Cabot has been making the finest, all-natural dairy products. From a small hillside village in Vermont, we've grown into a cooperative owned by 1,400 farm families throughout New England and New York. Along the way, we've won every major award for taste including

World's Best Cheddar*

*2006 World Championship
Cheese Contest, Madison WI

Isabel
3rd Generation –
Fairmont Farm
East Montpelier, Vermont

Mac's Macaroni & Cheese

Makes 8 servings

- 2 cups small elbow macaroni
- 3 tablespoons Cabot Salted Butter
- 3 tablespoons all-purpose flour
- 1/4 teaspoon dry mustard
- Pinch ground red pepper (cayenne)
- 1 dash Worcestershire sauce
- 2 cups whole milk, heated
- 4 cups grated Cabot Sharp Cheddar (about 16 ounces), divided
- 1/2 cup buttered bread crumbs

1. Cook and drain macaroni according to package directions.
2. Preheat oven to 350° F. Butter 2 1/2-quart baking dish or coat with nonstick cooking spray and set aside.
3. In large saucepan over medium heat, melt butter. Sprinkle flour into butter and whisk constantly until you have thick, smooth paste with nutty aroma, about 5 minutes.
4. Add mustard, red pepper and Worcestershire. Gradually whisk in milk and continue stirring until sauce thickens and returns to simmer.
5. Reduce heat to low. Add 3 cups of cheese and stir until melted. Add macaroni, stirring until well coated. Pour into prepared baking dish. Sprinkle remaining cheese evenly over top, followed by crumbs. Bake for 20 minutes, or until golden on top and bubbling throughout.



cabot
Vermont

Owned by Dairy Farmers
Since 1919

For more great recipes, visit:

www.cheddarrecipes.com



SPECIAL THANKS

We offer our **gratitude** to the following individuals, businesses and organizations who donated goods and services to **GMCW's Spring Affair in April**. Their generosity helped raise more than \$150,000 in one night, making it **the single most successful fundraising event in Chorus history**. Many thanks to all!

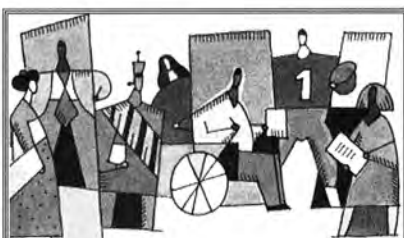
- 600 Restaurant
- at The Watergate
- A & D Custom Framing
- Agraria Restaurant
- American Airlines
- Anna Maria's Restaurant
- Annie's Paramount
- Steak House
- Arena Stage
- Barefoot Winery
- Belvedere House
- Bill Cutter
- Bill Mould
- Bittersweet
- Catering-Café-Bakery
- Blue Moon Restaurant
- Bodysmith Personal Training
- Bombay Palace
- Boston Gay Men's Chorus
- Café Berlin
- Café Italia
- Café Saint-Ex
- Café Zeus
- Canalside Inn
- Capital Petsitters, LLC
- Capitol City
- Brewing Company
- Cathedral Choral Society
- Celsius, A Restaurant
- Chandler Piano Service
- City Dogs
- Cloud 9 Restaurant
- Colvin Run Tavern
- Coppi's Restaurant
- Coral Cantigas, Washington's
- Latino Chorus
- Critter Beach
- Dale Mott
- Dana Tai Soon Burgess & Co.
- Daniel Clavel
- David Gregory
- David R. Daniels
- David Streit & Scott Button
- DC Cowboys
- Design Frames
- Detail: A Gallery for the Home
- Dos Locos Restaurant
- Doug Murphy, Fitness Training
- eatwelldc
- Eden Restaurant
- Eric Belkengren
- Evening Star Café
- FELD Entertainment – Ringling
- Bros. and Barnum &
- Bailey Circus
- Firefly Restaurant
- FIT Personal Training Gym
- Folger Theatre
- Freed Photography
- Carl Baldwin and Gary Turner
- Geno Sexton – In Memory of
- Darryl T. Tolson
- Giuseppe DeBartolo
- GLBT Arts Consortium
- go mama go!
- Great American Restaurants
- Hank's Oyster Bar
- Healing Hanz
- Alternative Therapy
- Health Bar
- Henredon
- High Museum of Art
- Hillwood Museum & Gardens
- Homebody
- Hoopla Traders
- Hotel Lombardy
- Hotel Rouge
- HRC Action Center and Store
- Hugo Boss of Georgetown
- Jack Art Productions
- Jack Musser and Terry O'Brien
- Jim Weinstein, Life Consultant
- Joe Bloomer
- Joe Canter
- John White
- Johnson's Florist and
- Garden Centers
- JW Marriott Hotel
- Kathy McGee &
- Marsha Holloman
- Kennedy Gallery
- Kevin Webster
- Kinkead's,
- An American Brasserie
- Knightsbridge Management
- Corporation
- La Tomate
- Larry Cohen
- Lauriol Plaza Restaurant
- Lawrence S. Jacobs &
- Associates, PC
- Leather Rack
- Lesbian & Gay Chorus
- of Washington
- Lisner Auditorium,
- GW University
- M2
- Mandalay Massage
- Mar de Plata
- Mark & Orlando's
- Mark D. Uhen
- McCormick & Schmick's
- Seafood Restaurant
- McFadden's Restaurant
- and Bar
- Melbourne E. Jenkins, Jr. &
- Juan Febles
- MetroWeekly
- Michael Baker
- Michael Hill & Michael Bigley
- Mimi Schneider
- Miss Pixie's Furnishings &
- Whatnot
- Nage Restaurant
- National Philharmonic
- National Symphony Orchestra
- Newman Gallery &
- Custom Frames
- Nick Pietras
- Nishio Conservation Studio
- Nora Restaurant
- North Coast Men's Chorus
- Olsson's Books and Records
- Palm Restaurant
- Panache of Delaware
- Partners Bistro & Piano Bar
- Partnership Wealth
- Management, LLC
- Paul's of Chevy Chase
- Peabody Court Hotel
- Phil Rogerson
- Pizzeria Paradiso
- Planet X Café
- Prizm Consulting Tax Firm

SPECIAL THANKS

Renu Med Spa
 Restaurant Kolumbia
 Ristorante Luigino!
 Rob Hall
 Rob Kleinsteuber
 Robert J. Featherstone
 Robert Thomas Salon
 Ronald M. Norberg
 Rosemary's Thyme Bistro
 Round House Theatre
 Royal Rose Inn
 RT's Restaurant
 Russ Capps
 Samantha's Restaurant
 Scott Spahr
 Serenity Day Spa
 Sette Osteria
 Shakespeare Theatre Company
 Signature Theatre
 Sonoma Restaurant and
 Wine Bar
 South Beach Tanning Salon
 South Pacific Florist
 Southwest Airlines

Harold Lewis
 Stan Piotroski
 Step Afrika!
 Steve Crutchfield &
 Richard Ormseth
 Strathmore
 Stuart Kopperman &
 Christopher Grieder
 Thaiphoon Restaurant
 The Arlington Players
 The Choral Arts Society
 of Washington
 The Cultured Pearl Restaurant
 The Daily Grill
 The Henley Park Hotel
 The Honorable Carol
 Schwartz
 The Morrison-Clark Inn
 The Opportunity Shop of The
 Christ Child Society
 The Pelican Loft
 The Phillips Collection
 The Studio Theatre
 The Washington Ballet

The Washington Chorus
 The Washington Savoyards
 The Wooden Indian, Ltd.
 Thomas Circle Singers
 Tosca Restaurant
 Touch Studio of Massage
 Vastu
 Versatool Services, Inc.
 Video Rack
 Virginia Grieder
 Washington Bach Consort
 Washington Improv Theater
 Washington Men's Camerata
 Washington National Cathedral
 Washington National Opera
 Washington Performing Arts
 Society
 Washington Plaza
 Willard InterContinental Hotel
 Willow Restaurant
 Woolly Mammoth Theatre
 Company
 Wynn Creasy Fine Art, LLC
 Yuroz



“We must learn to live
 together as brothers or
 perish together as fools.”

—Dr. Martin Luther King, Jr.

Edward Jones celebrates the
 rich diversity of our community
 and the world at large.

Sue Gruskiewicz
 801 N Quincy St. Suite 150
 Arlington, VA 22203
 703.243.9276

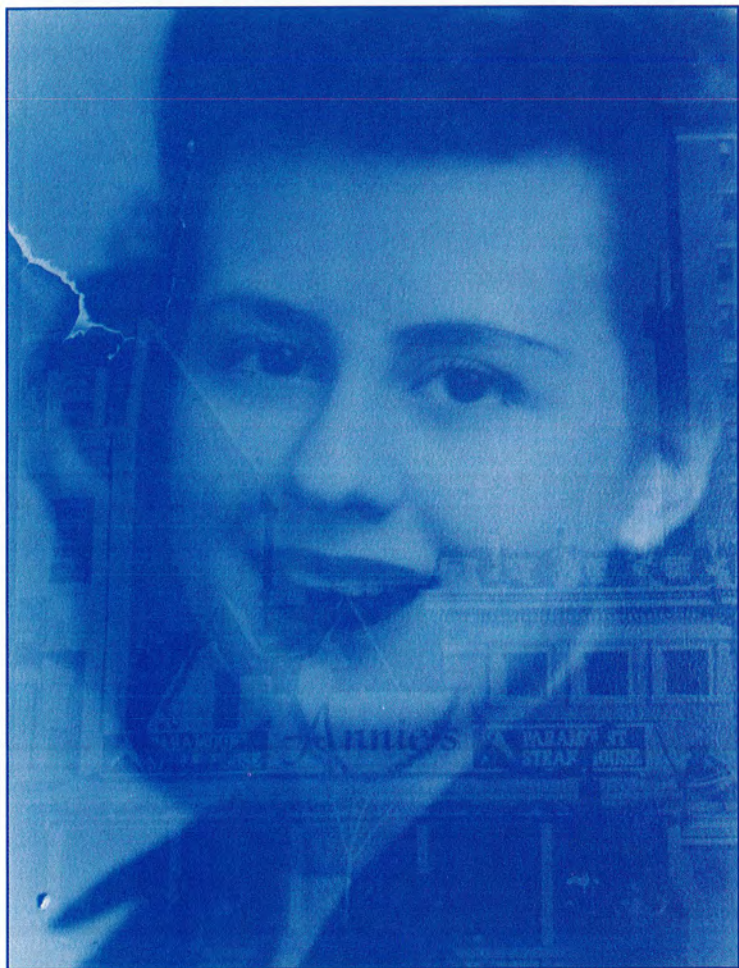
www.edwardjones.com
 Member SIPC

Edward Jones
 Serving Individual Investors Since 1871

GROOVY
 Cards & Gifts **dc**

428 8th Street, SE
 Washington, DC 20003
 (8th & Penn. SE)

202.544.6633
www.groovydc.com



Annie's
 **PARAMOUNT
STEAK HOUSE**

CELEBRATING OUR 59TH ANNIVERSARY
1948-2007



ROUND
HOUSE
THEATRE

**SUBSCRIBE NOW
TO THE
2007/2008 SEASON**

IN BETHESDA

A LESSON BEFORE DYING

By Romulus Linney
Based on the novel by Ernest J. Gaines
Directed by Timothy Douglas

SEPTEMBER 19 – OCTOBER 14, 2007

TREASURE ISLAND

A play by Ken Ludwig
Based on the novel by
Robert Louis Stevenson
Directed by Blake Robison

NOVEMBER 28 – DECEMBER 30, 2007

THE BOOK CLUB PLAY

World Premiere!
By Karen Zacariás
Directed by Nick Olcott

FEBRUARY 6 – MARCH 2, 2008

LORD OF THE FLIES

Adapted for the stage by Nigel Williams
From the novel by William Golding
Directed by Blake Robison

APRIL 2 – 27, 2008

NIXON'S NIXON

By Russell Lees
Directed by Jerry Whiddon
Starring Ed Gero and Conrad Feininger

MAY 28 – JUNE 22, 2008

IN SILVER SPRING

redshirts

World Premiere!
By Dana Yeaton
Directed by Lou Bellamy

Co-produced with Penumbra
Theatre of St. Paul, MN

OCTOBER 17 – NOVEMBER 11, 2007

240.644.1100

www.roundhousetheatre.org

Neighbors & Friends

Drink



**Miller Brewing Co. & Premium Distributors
of Washington, D.C.**

are Proud Supporters of the

GAY MEN'S CHORUS OF WASHINGTON, D.C.

MEDICAL FACULTY ASSOCIATES

THE GEORGE WASHINGTON UNIVERSITY



EVERY DAY WE CARE FOR PRESIDENTS, KINGS, PRINCES... WHY NOT YOU?

Don't you also deserve cutting edge technologies and comprehensive medical care from 280 physicians in 41 medical and surgical subspecialties housed in one location?

Don't you also deserve to have your care documented in an electronic medical record to enhance coordinated care from your physician team?

Don't you also deserve to have easy access to your prescriptions that check for drug interactions before they are electronically sent to your pharmacy which improves speed, accuracy and avoids errors?

We think you do

gwdocs.com

Conveniently located one short block from the Foggy Bottom/GW Metro
2150 Pennsylvania Ave. NW, Washington, DC 20037
(202) 741-3000

VOLKSWAGEN



IS PROUD TO SPONSOR THE
GAY MEN'S CHORUS
OF WASHINGTON, DC



From sea to shining sea...

AMERICA the Fabulous!
GMCW's
2007 - 2008



Federal City Performing Arts Association
2000 P Street, NW, Suite 730
Washington, DC 20036

PRSR
FIRST CLASS
U.S. POSTAGE
PAID
MERRIFIELD, VA
PERMIT NO. 1228



SPECIAL THANKS TO OUR SPONSORS:

Arnie's
STRAWBERRIES
A
Avacations.com/rainbow
As individual as you are

